

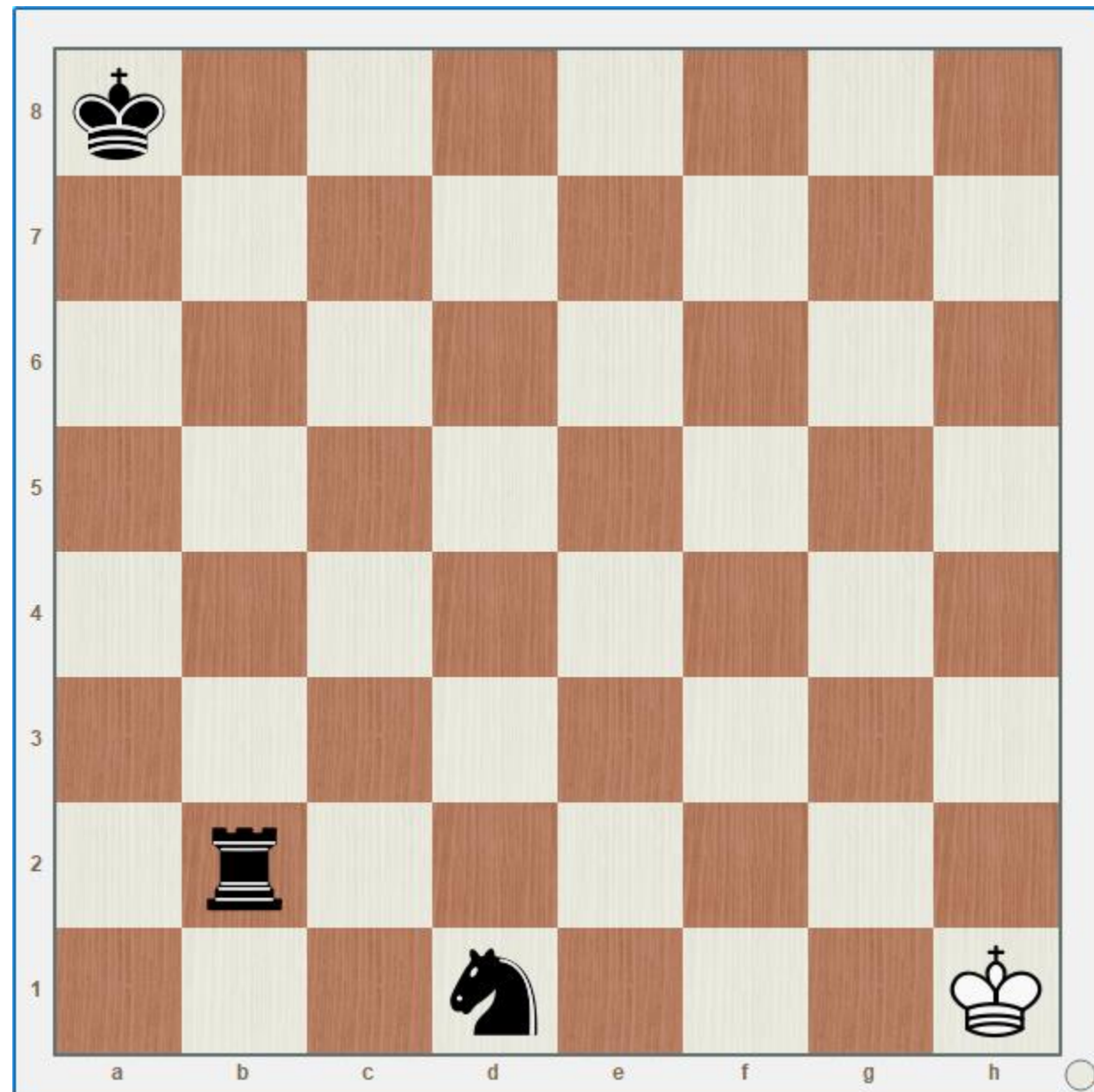
Exercícios

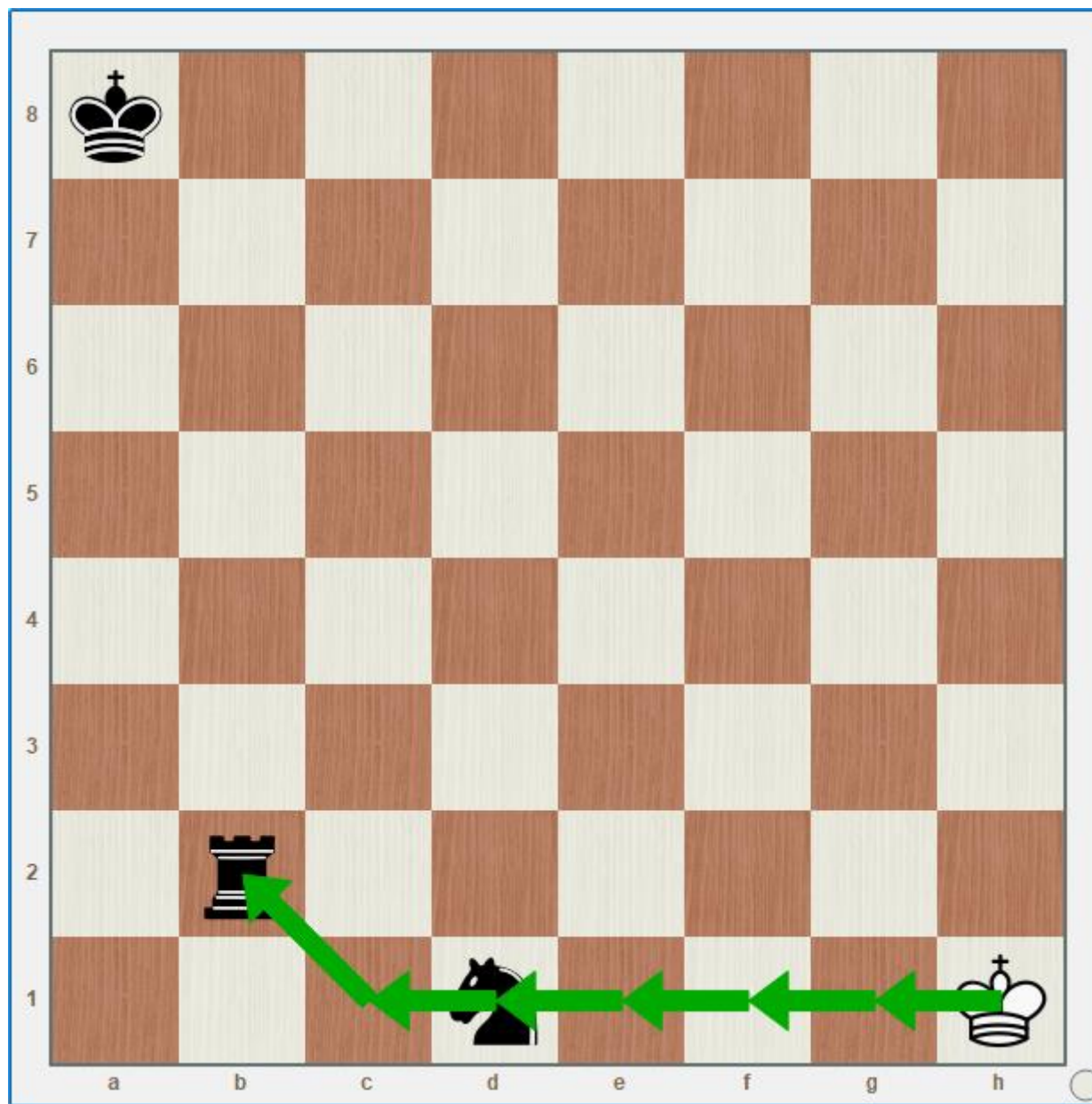
Regras Básicas

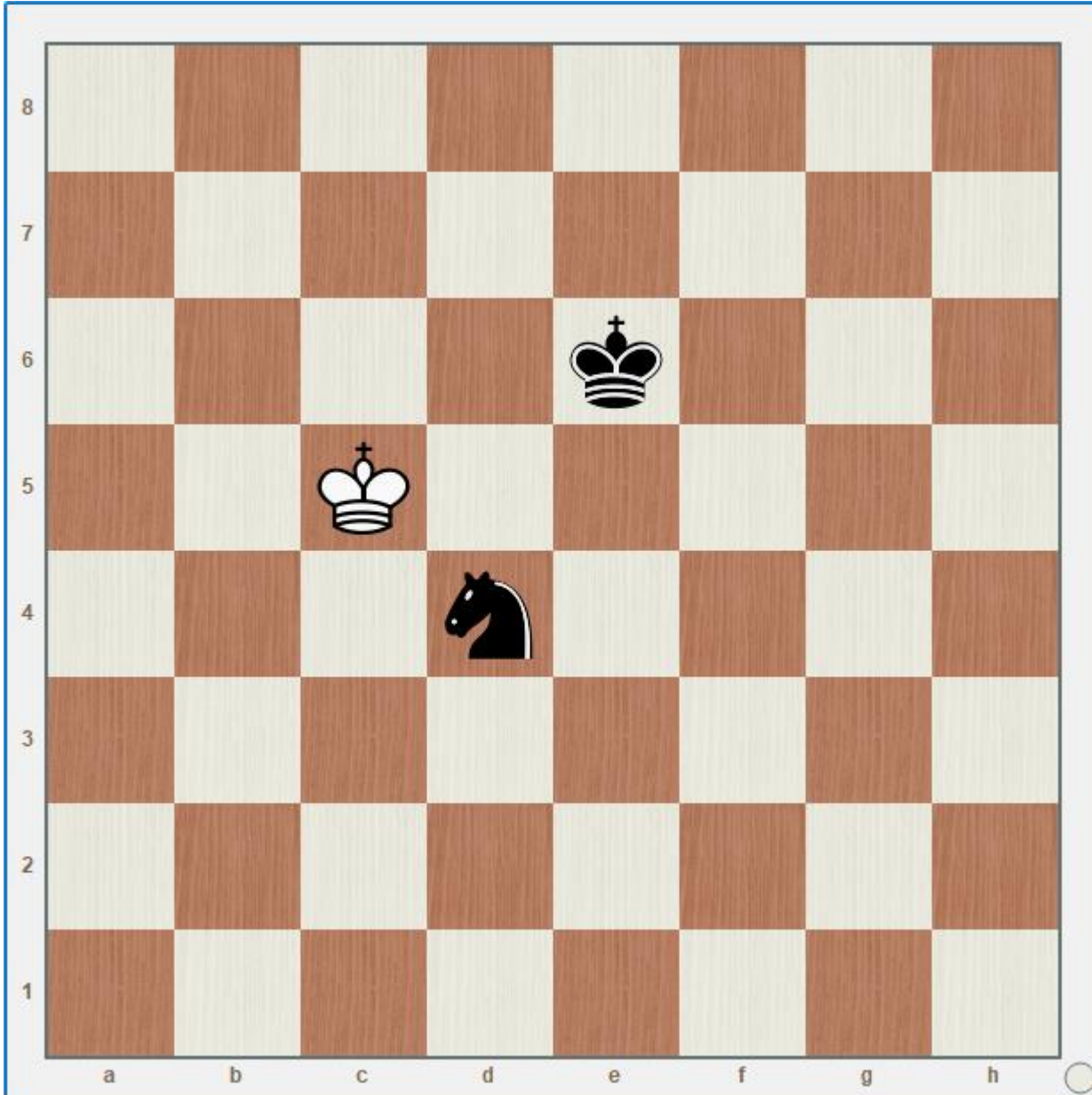
Xadrez da Região do Potengi



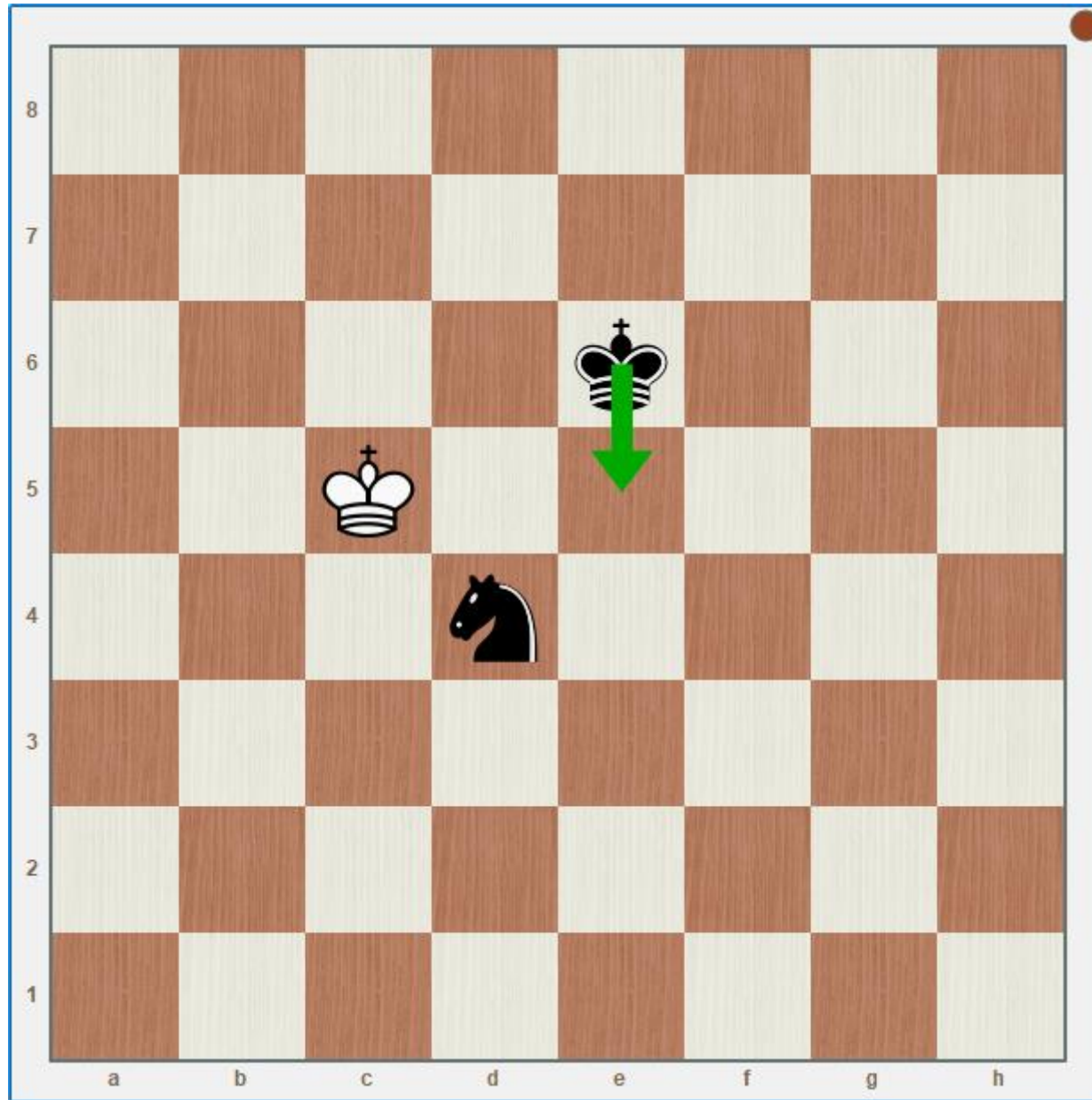
Indique o caminho que o rei deve seguir para capturar a Torre.



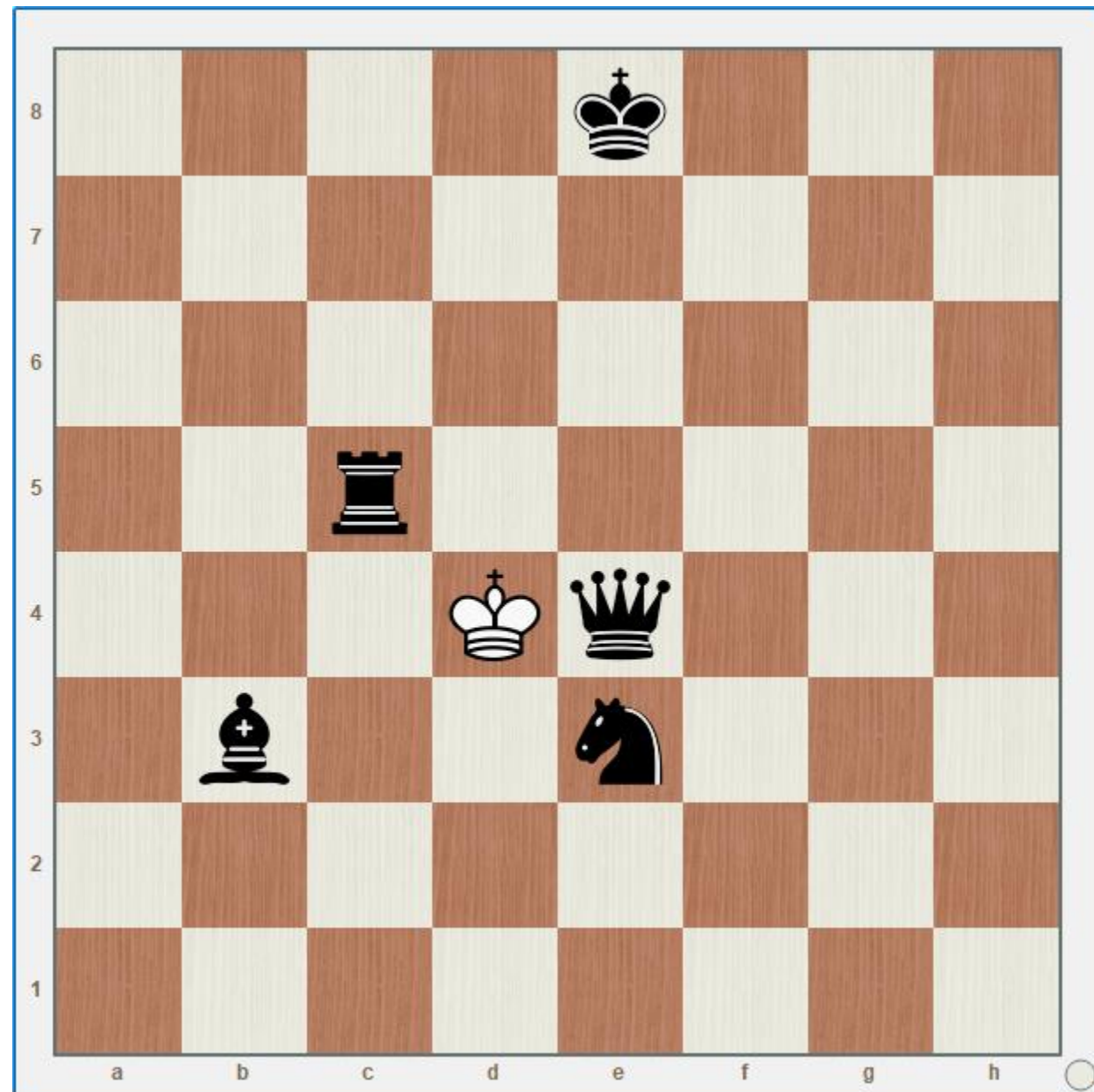


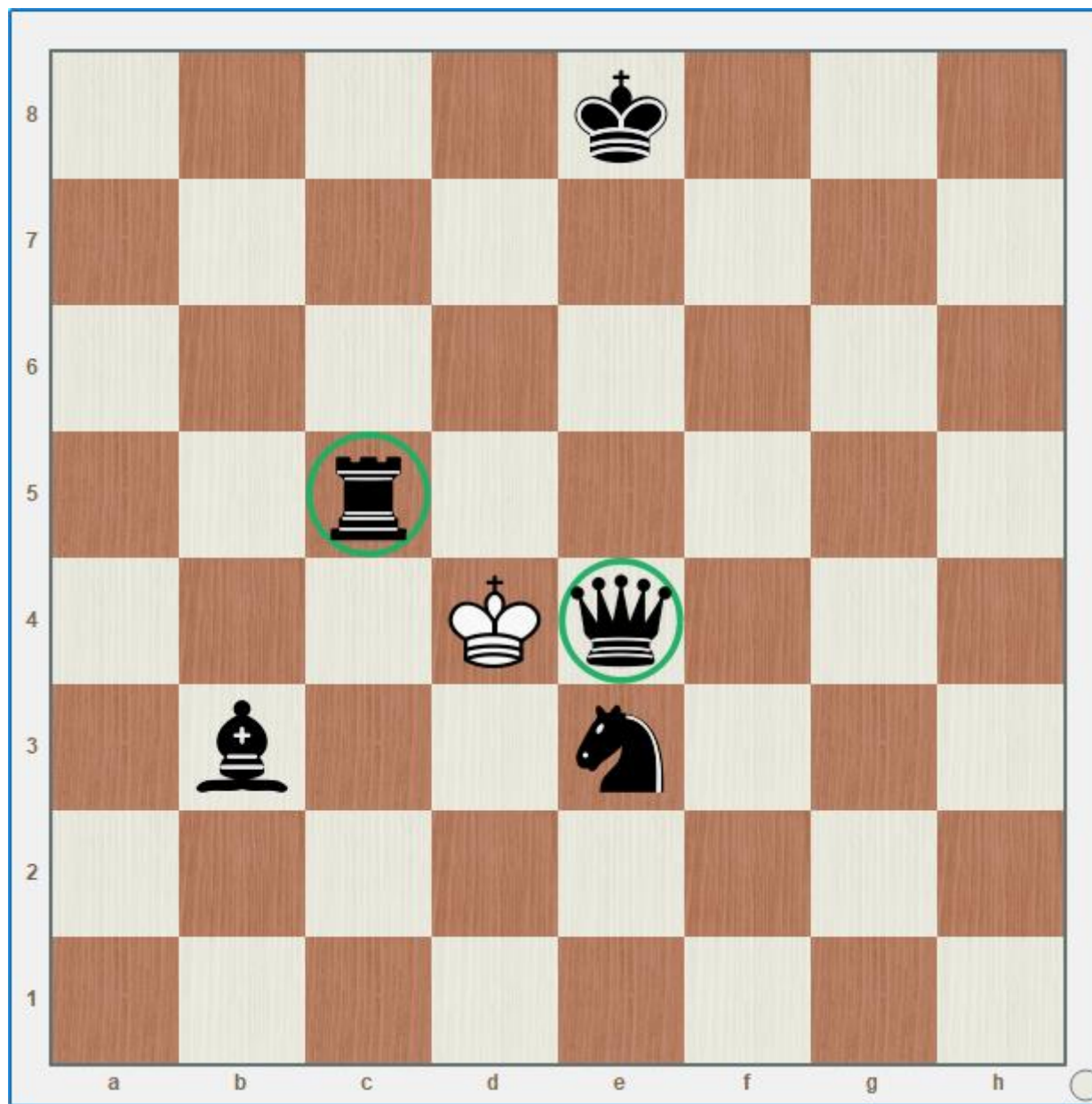


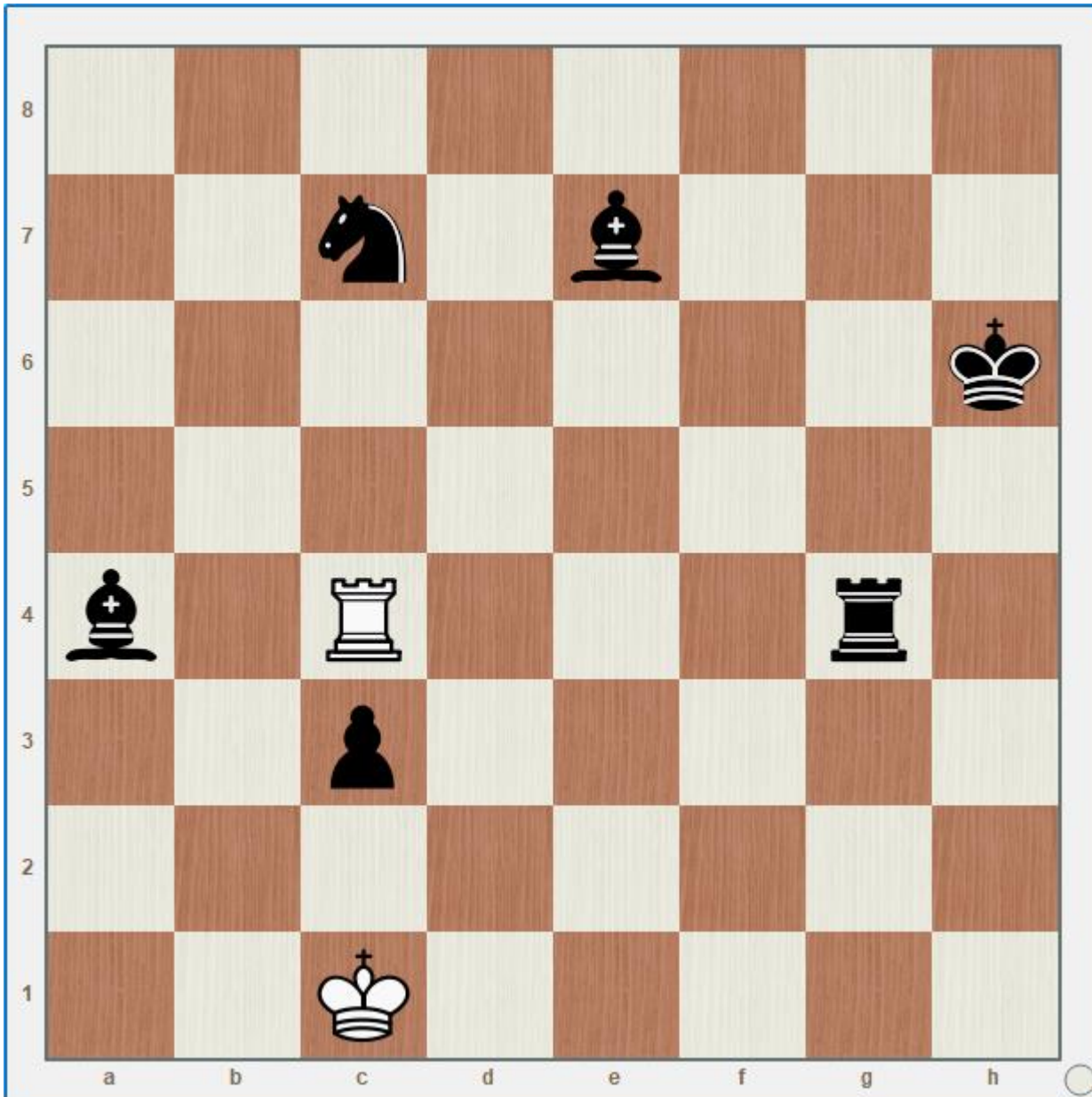
Onde deve ir o rei preto para que o branco não capture o cavalo?



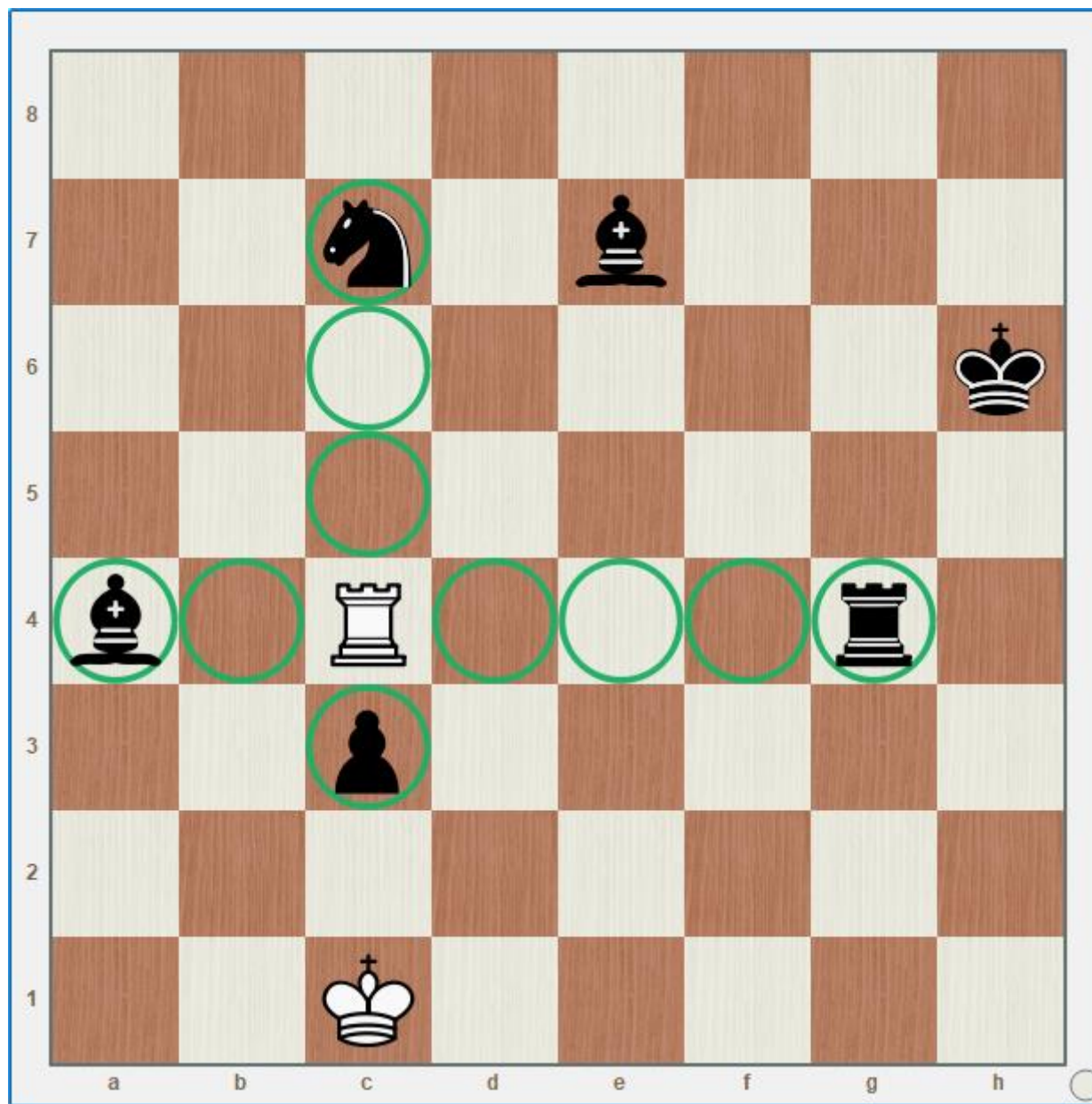
Indique que peças o rei pode capturar em uma só jogada.



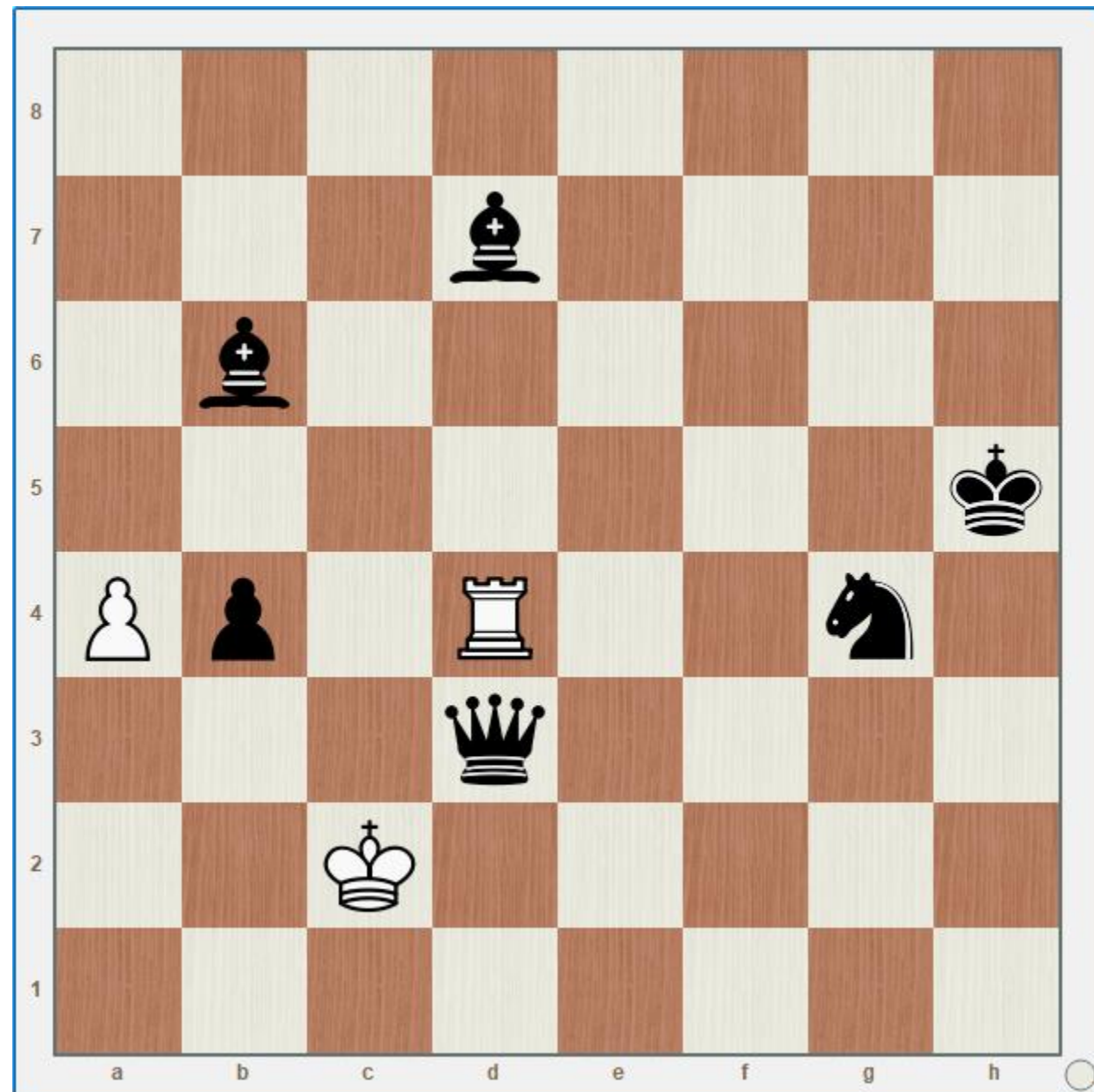


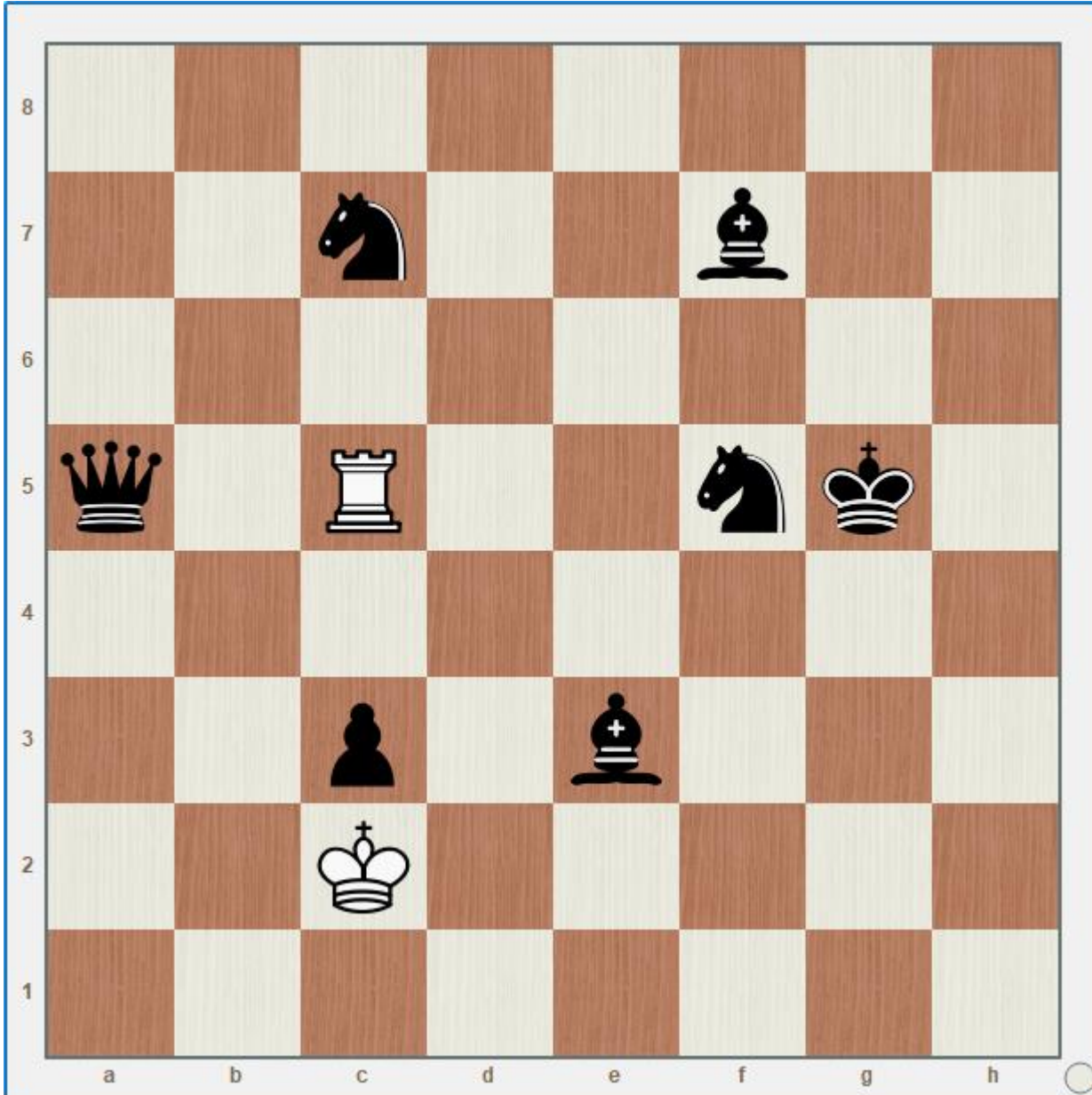


Indique todas as casas para onde pode ir a torre branca em um só lance.



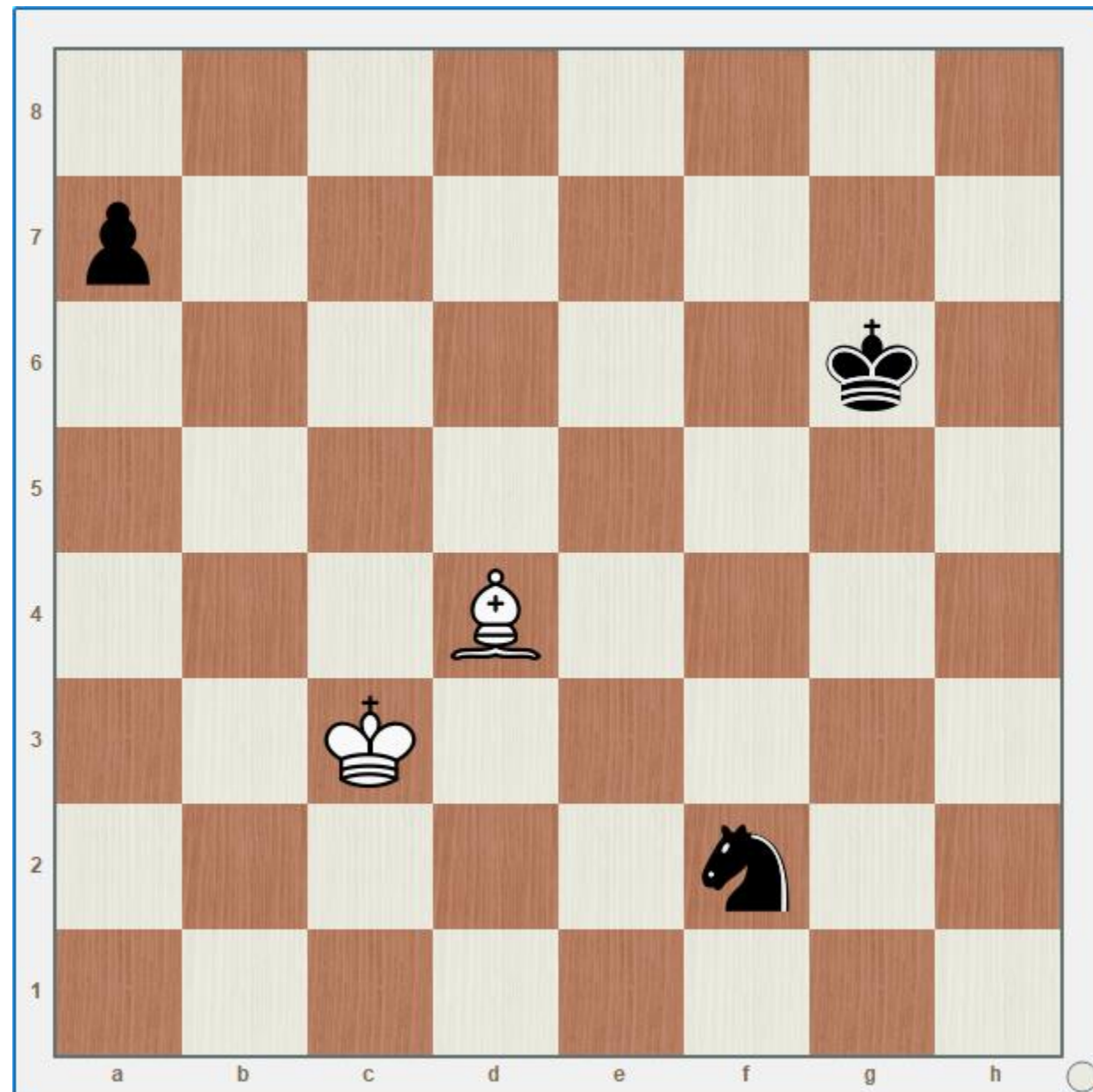
Indique as peças que a torre pode tomar em uma só jogada. Qual parece ser a melhor?

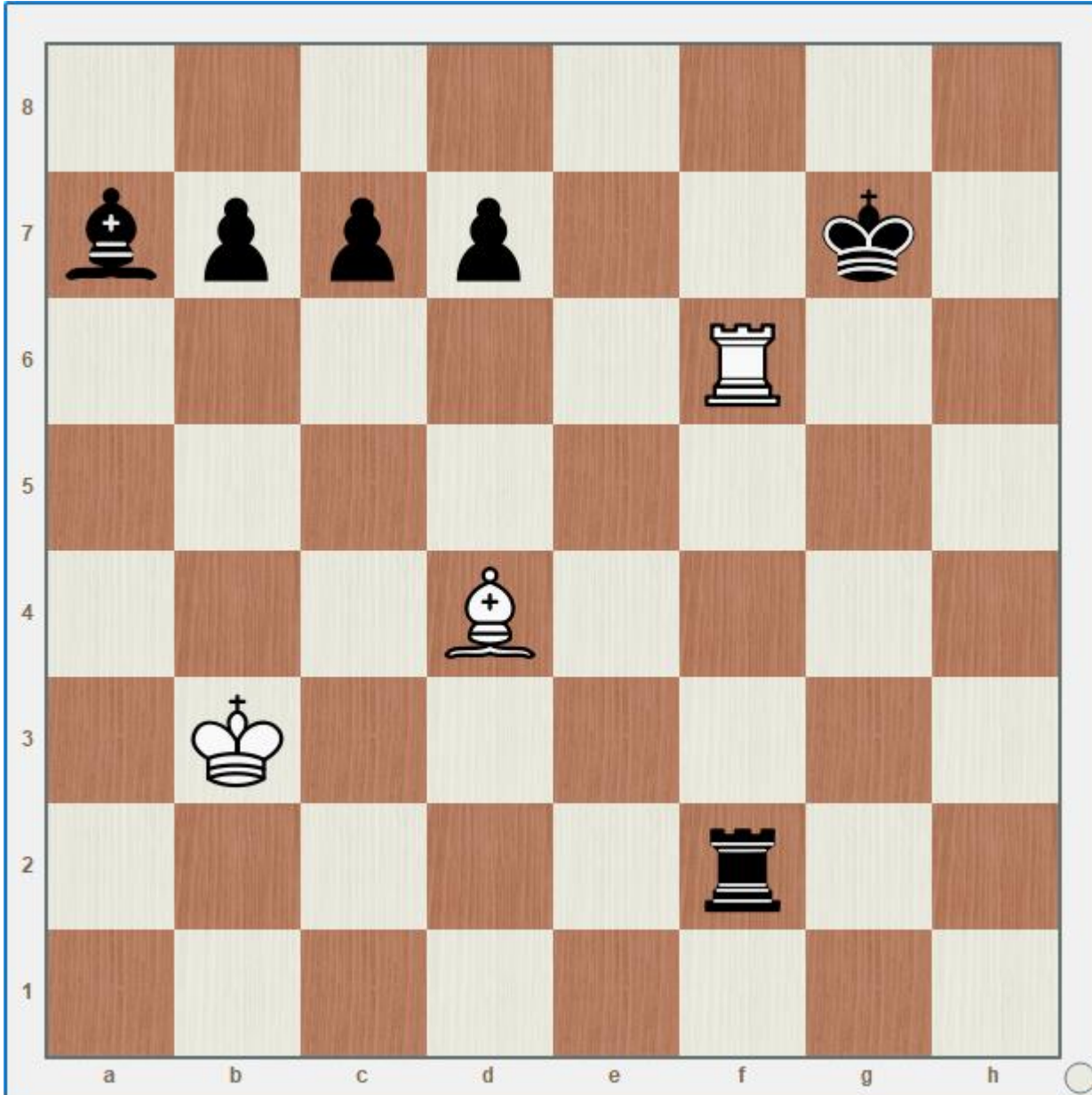




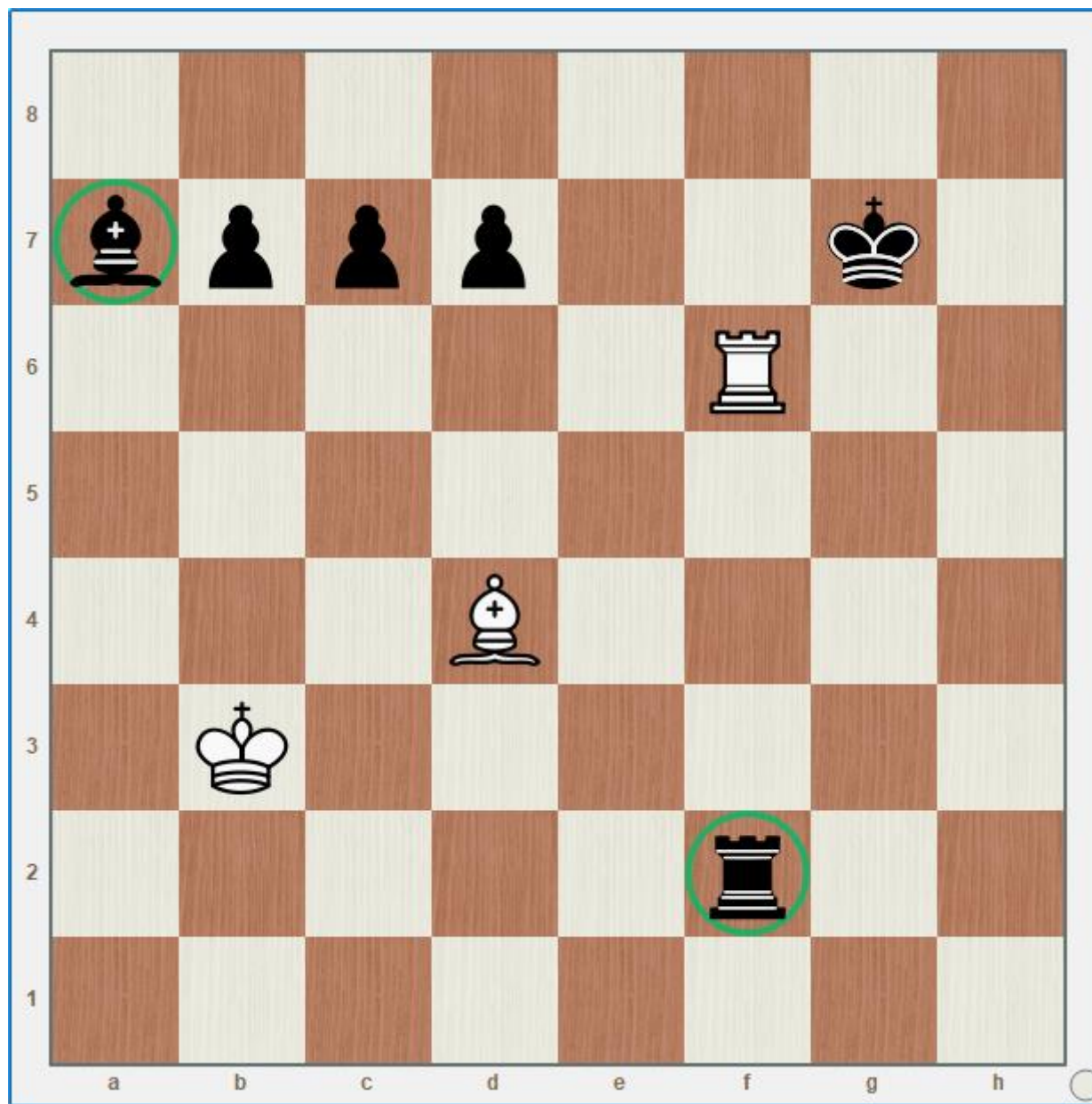
Indique as peças que a torre pode tomar em uma só jogada. Qual parece ser a melhor?

Indique todas as casas que o bispo pode ocupar em uma só jogada.

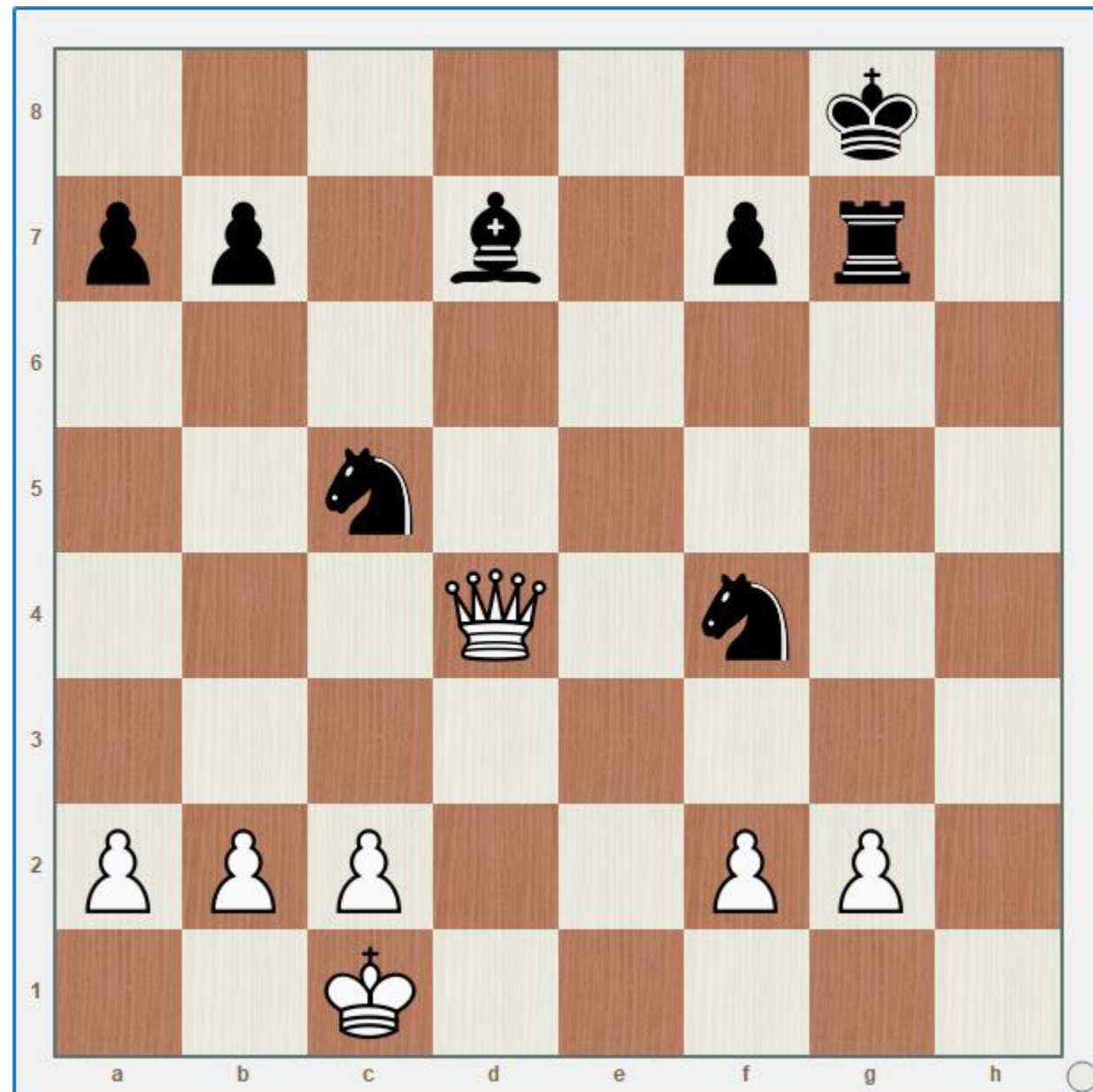




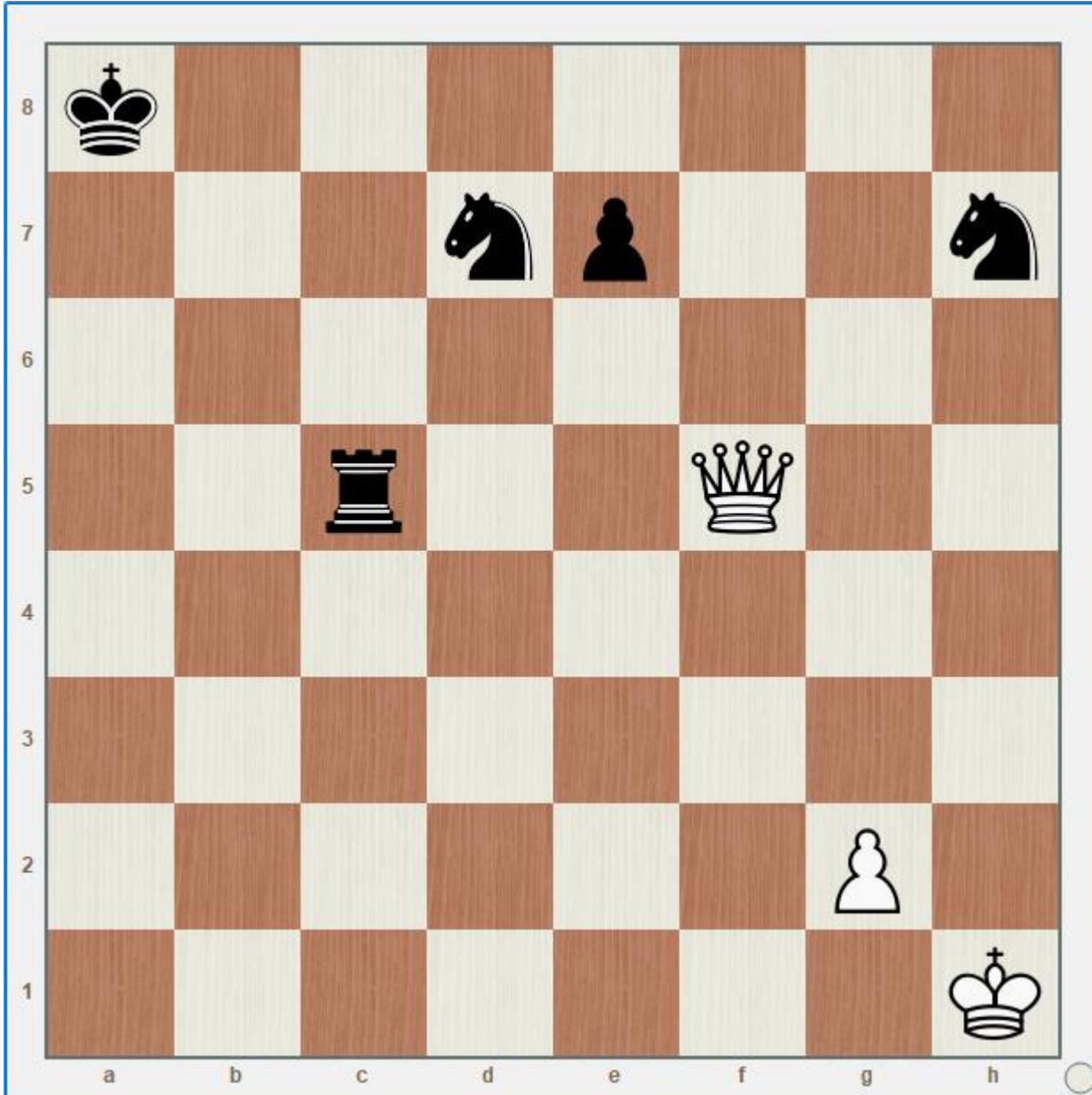
Indique todas peças pretas que o bispo branco pode capturar em uma só jogada.



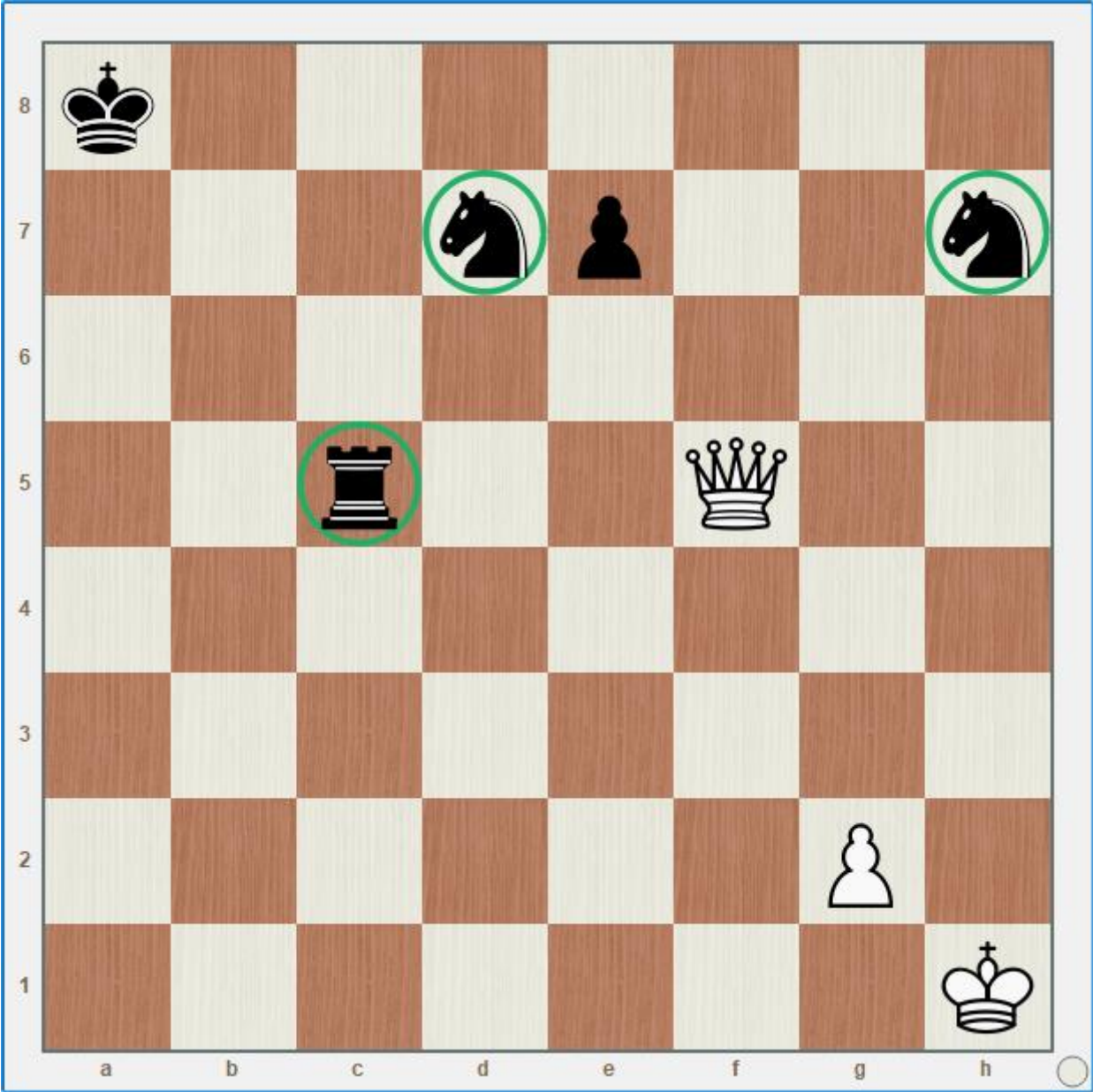
Indique todas as peças pretas que a dama branca pode capturar em uma só jogada.
Qual parece ser a melhor?



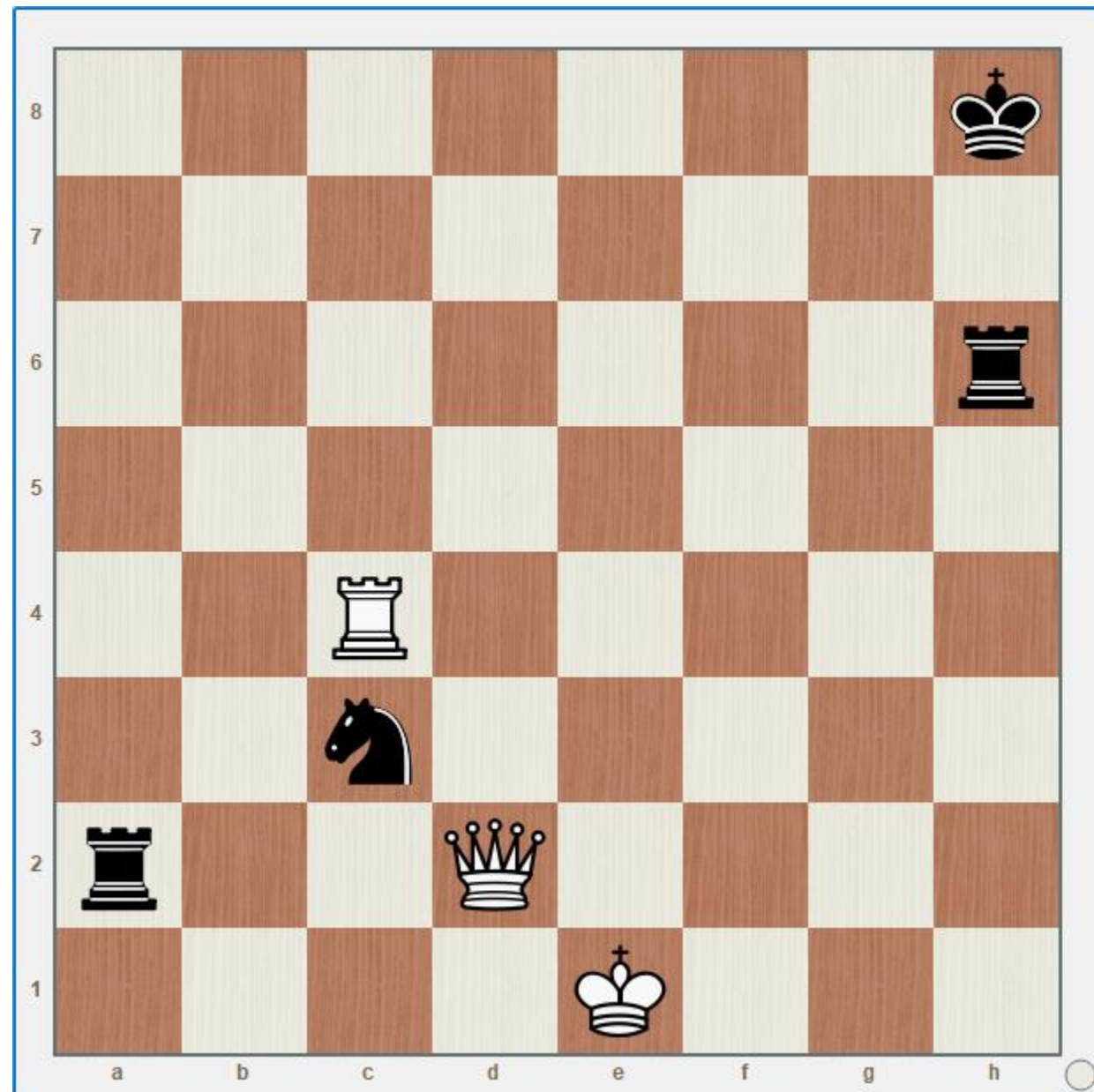


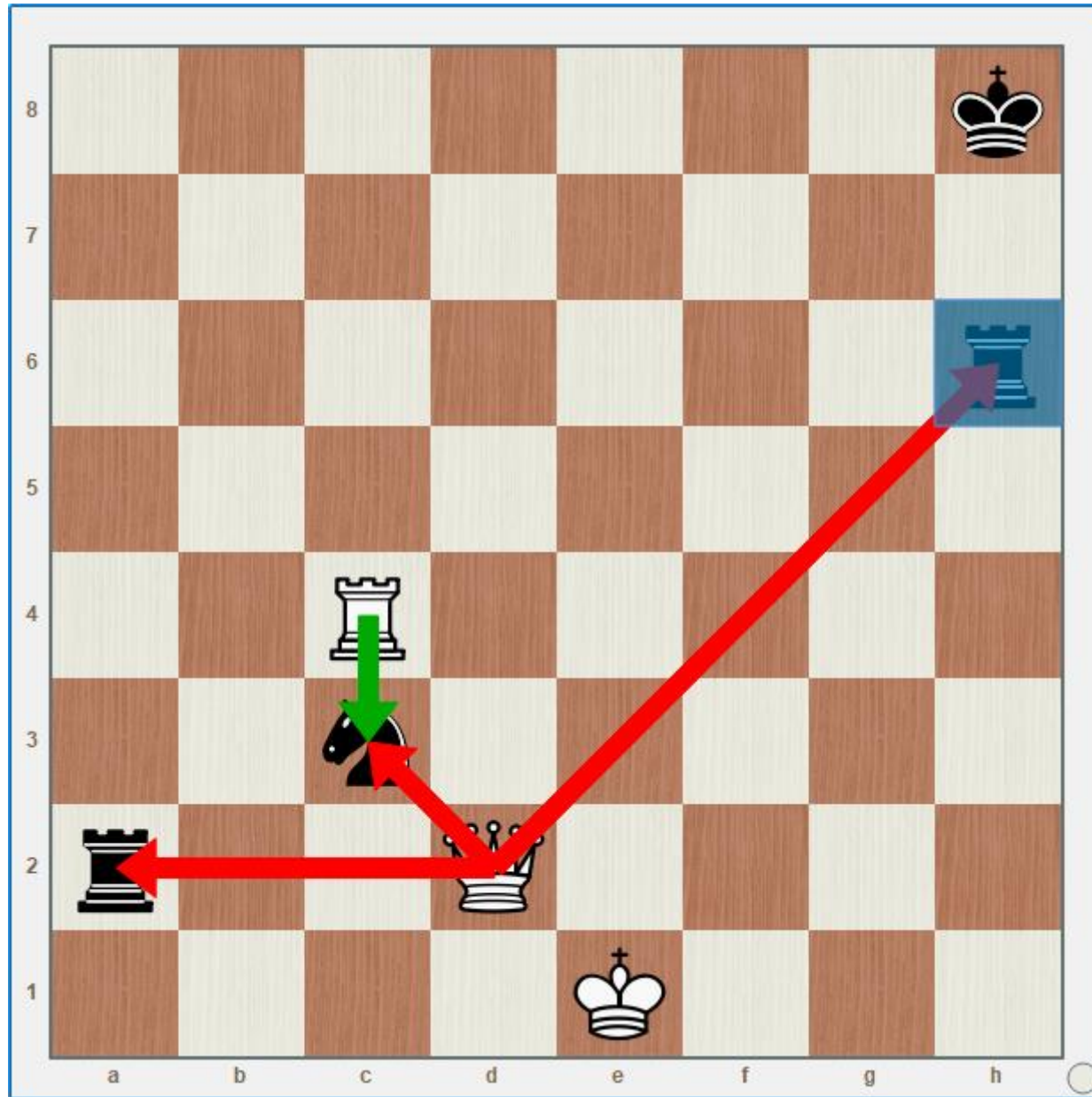


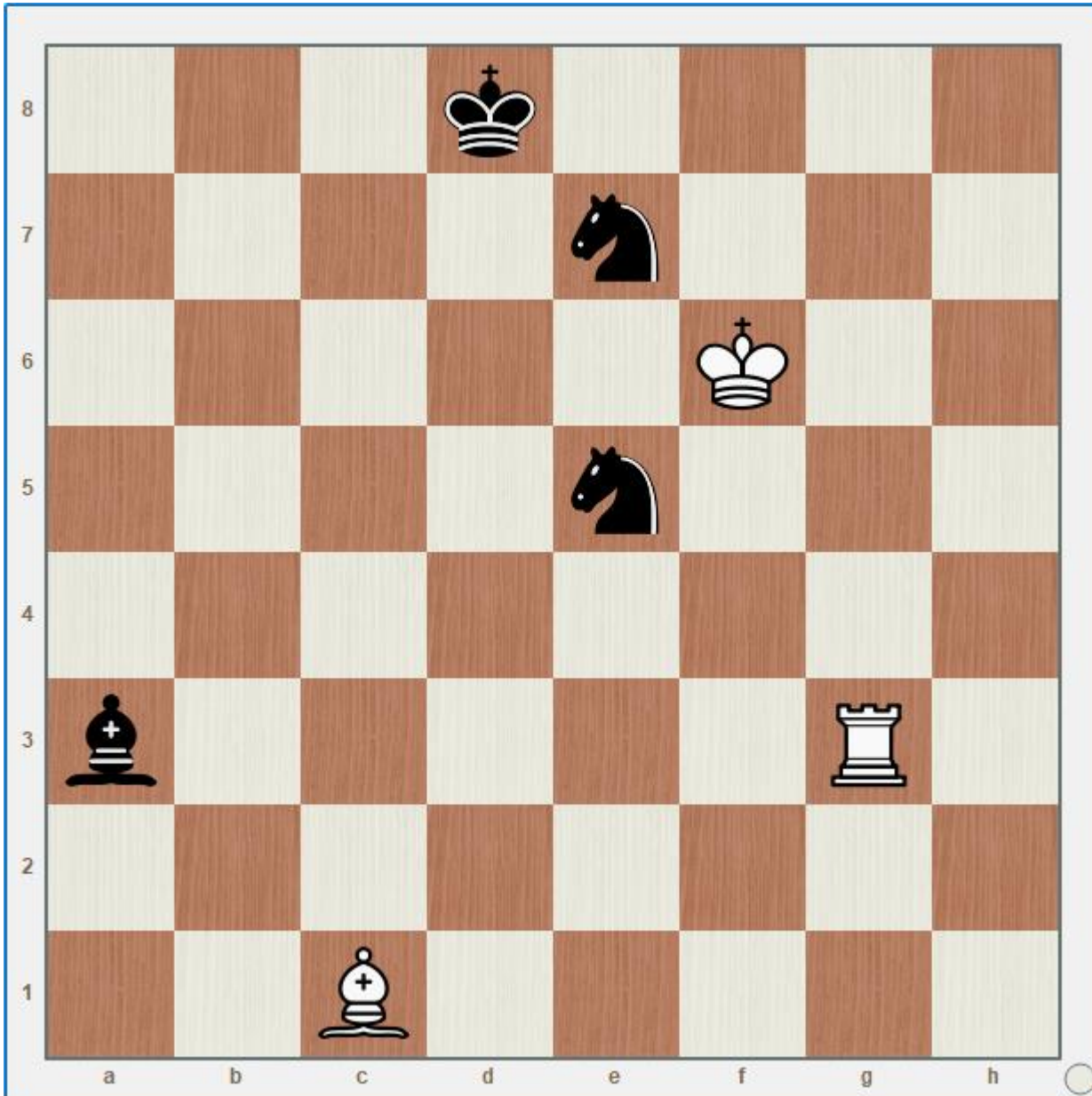
Indique todas as peças que a dama branca pode capturar em uma só jogada.



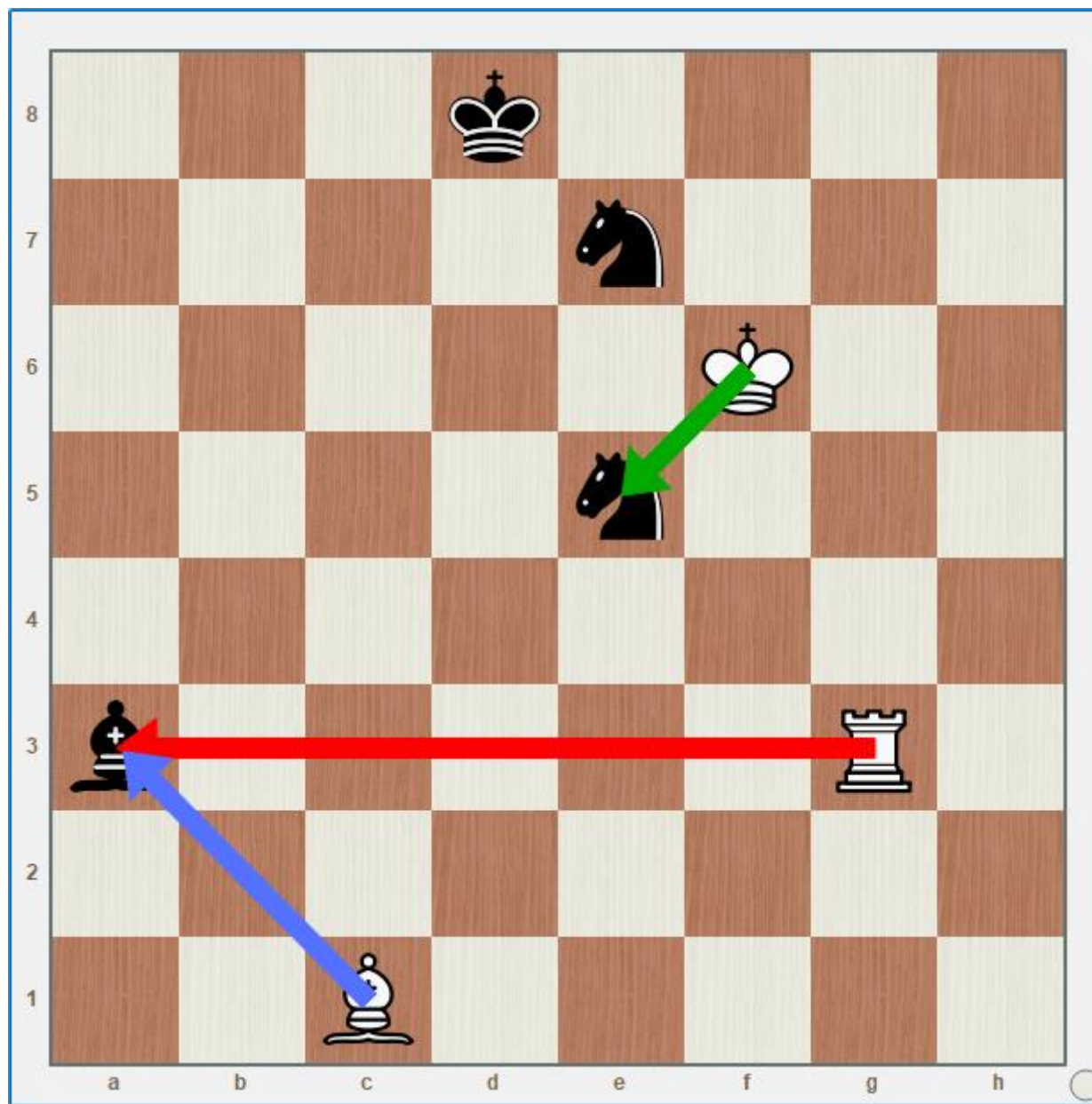
Indique todas as capturas que as brancas podem realizar. Qual parece ser a melhor?



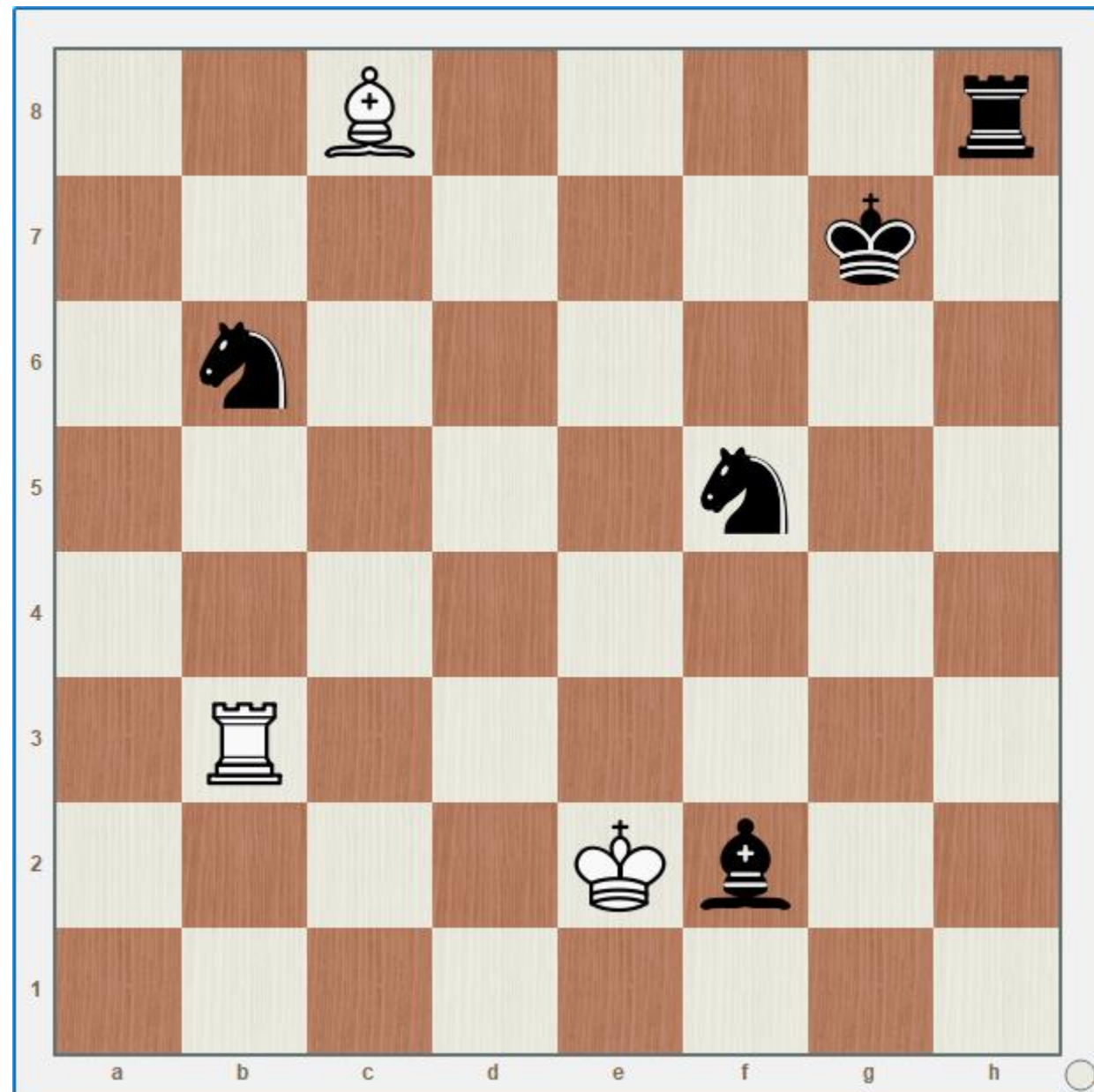


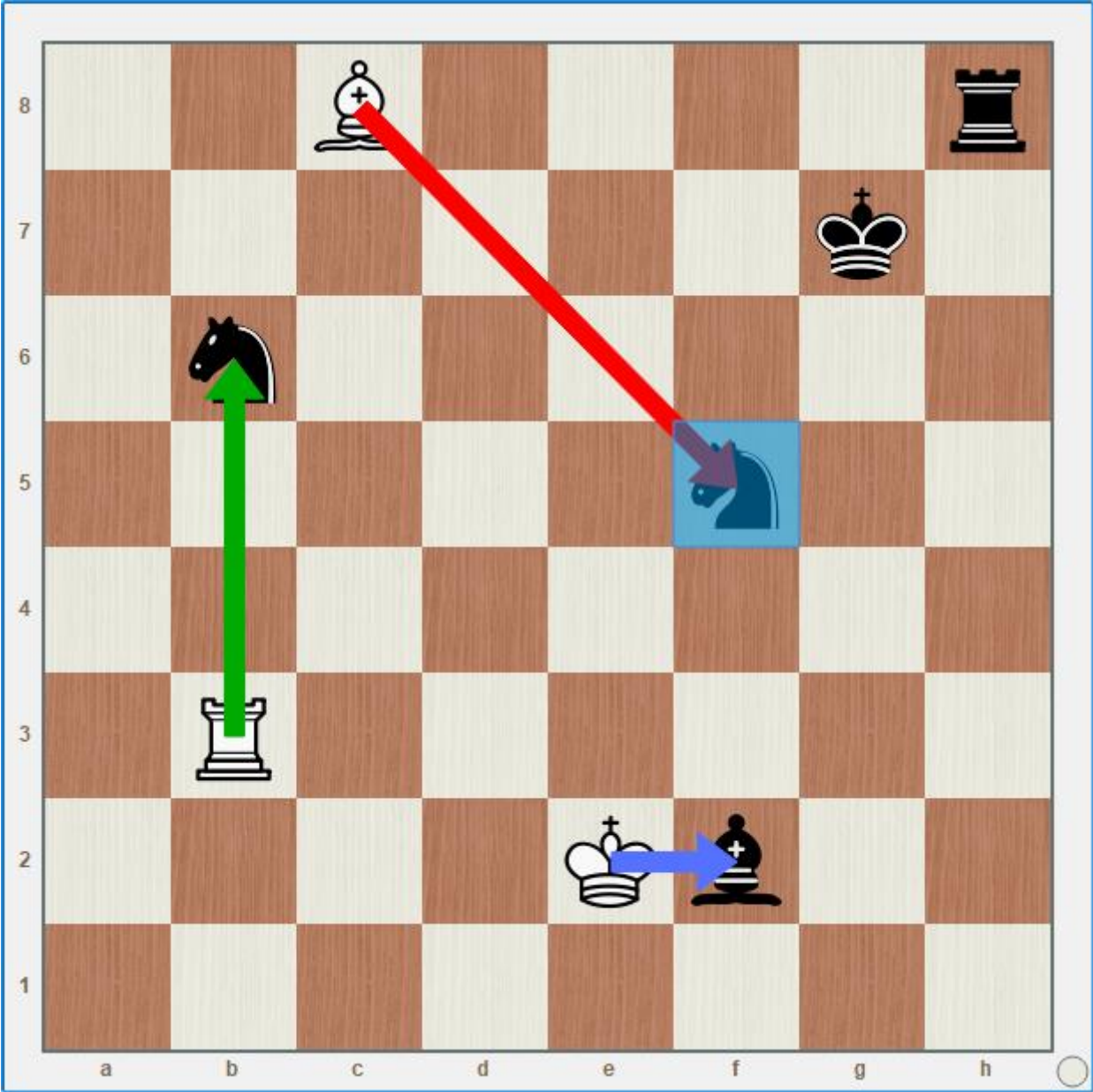


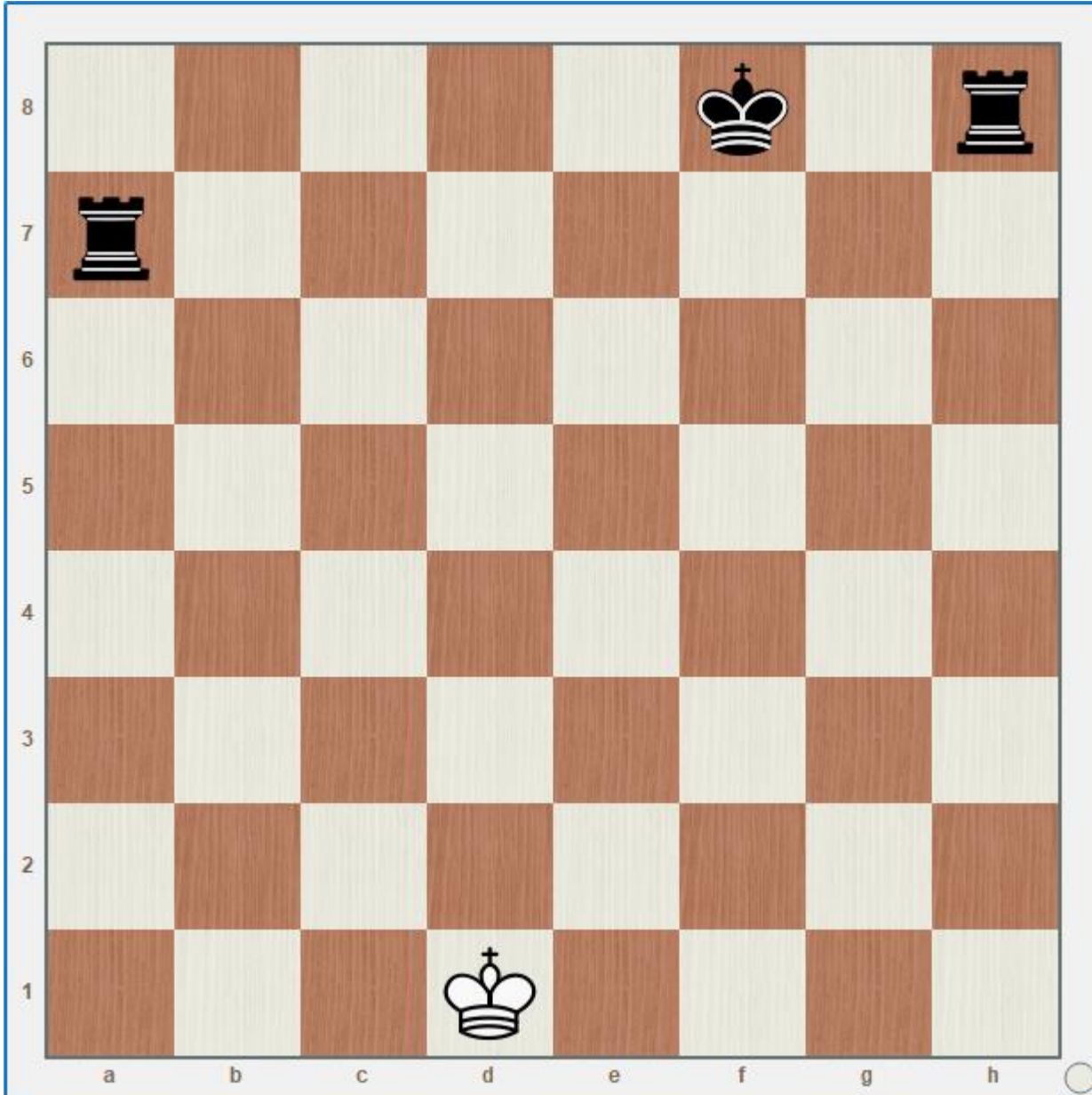
Indique todas as possíveis capturas das peças brancas.



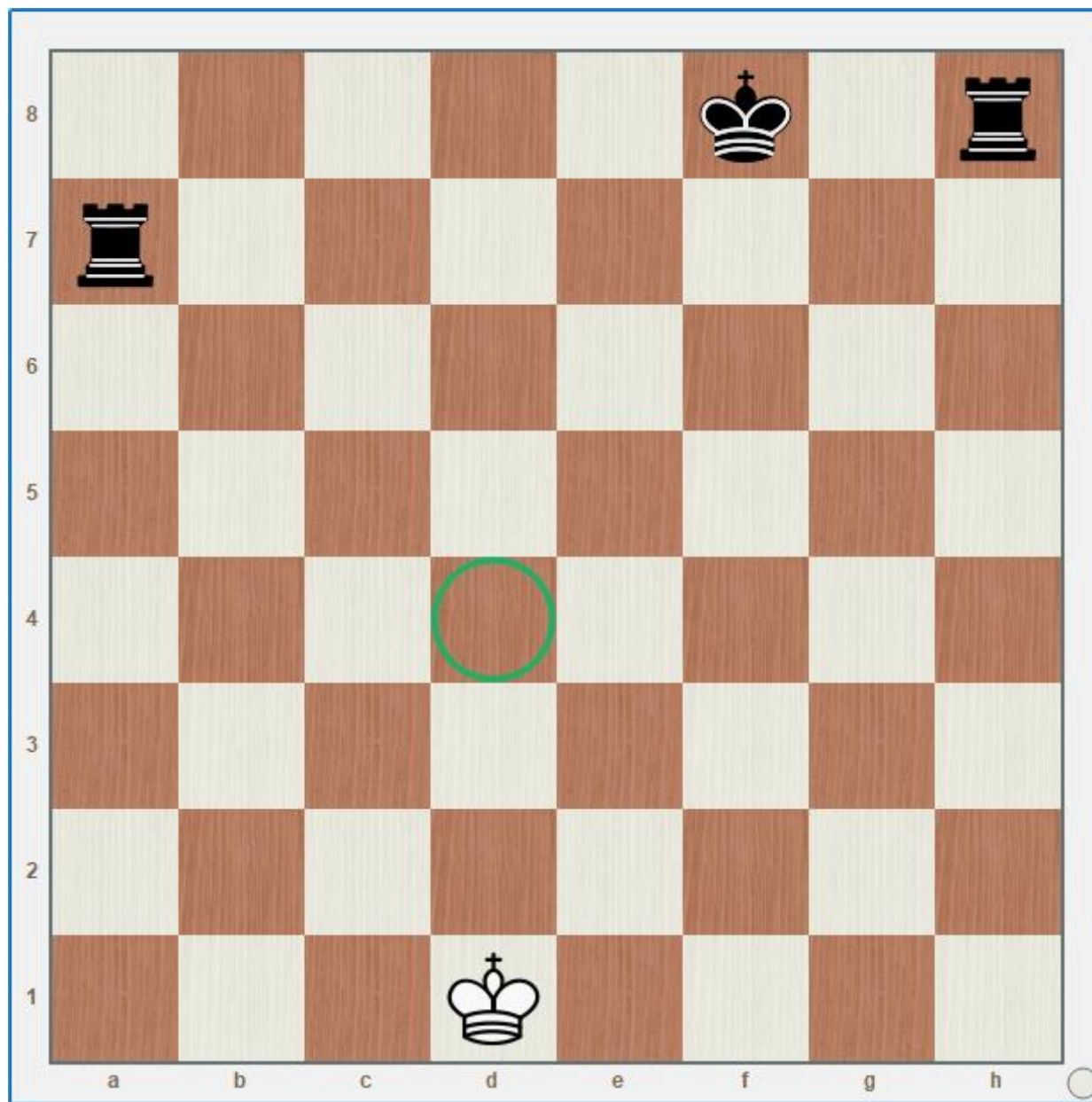
Indique todas as capturas que as brancas podem realizar. Qual parece ser a melhor?



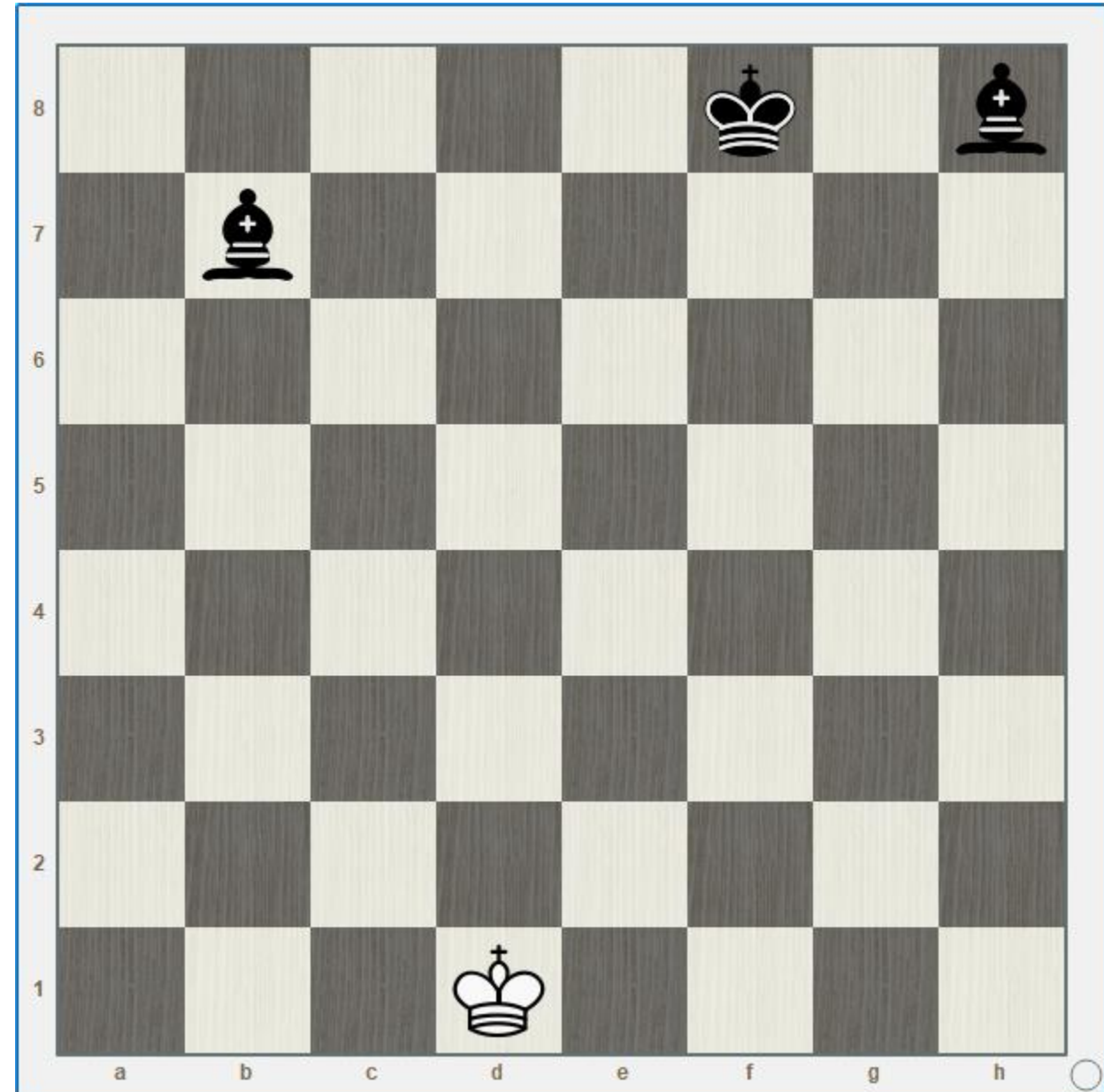


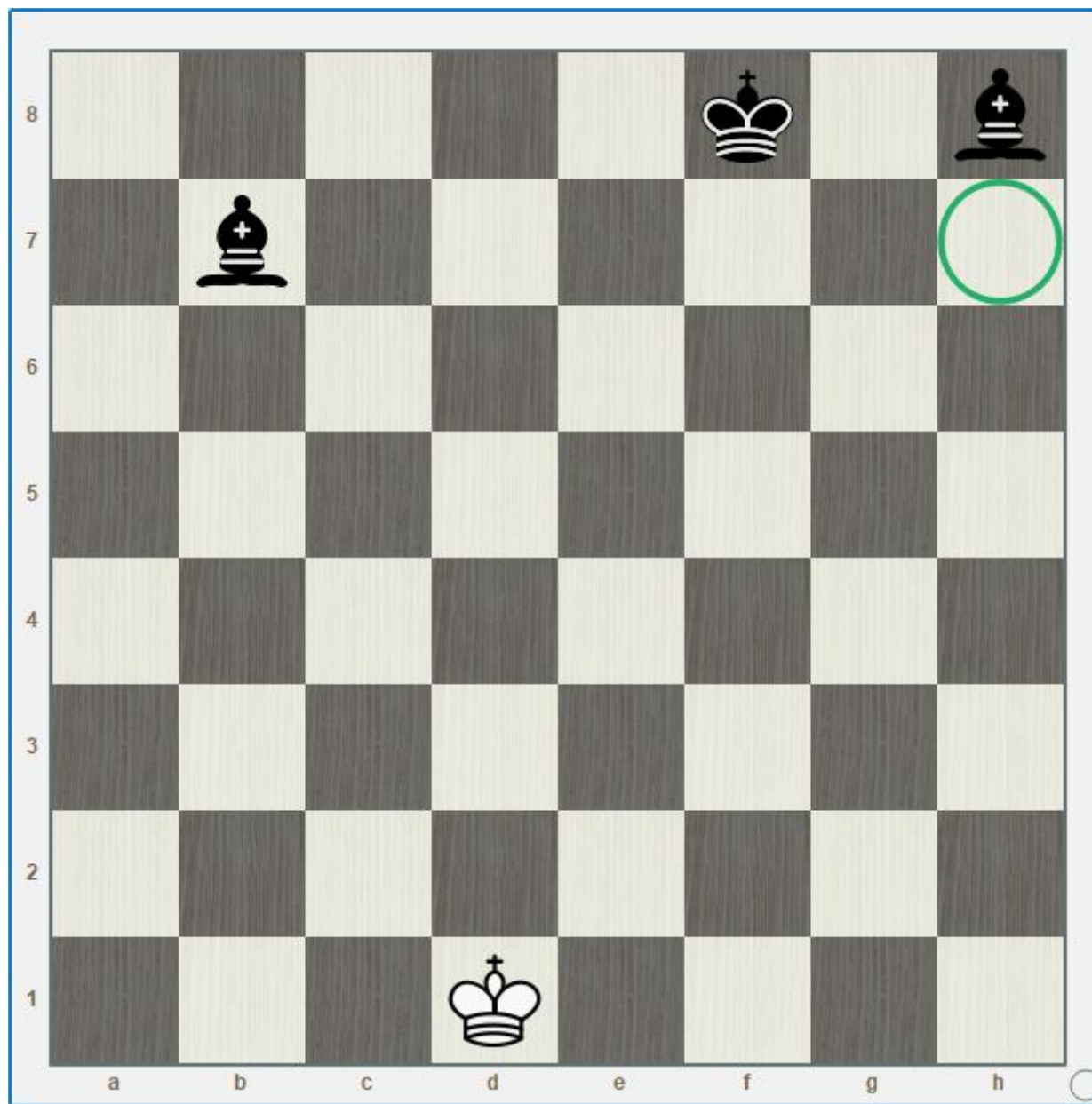


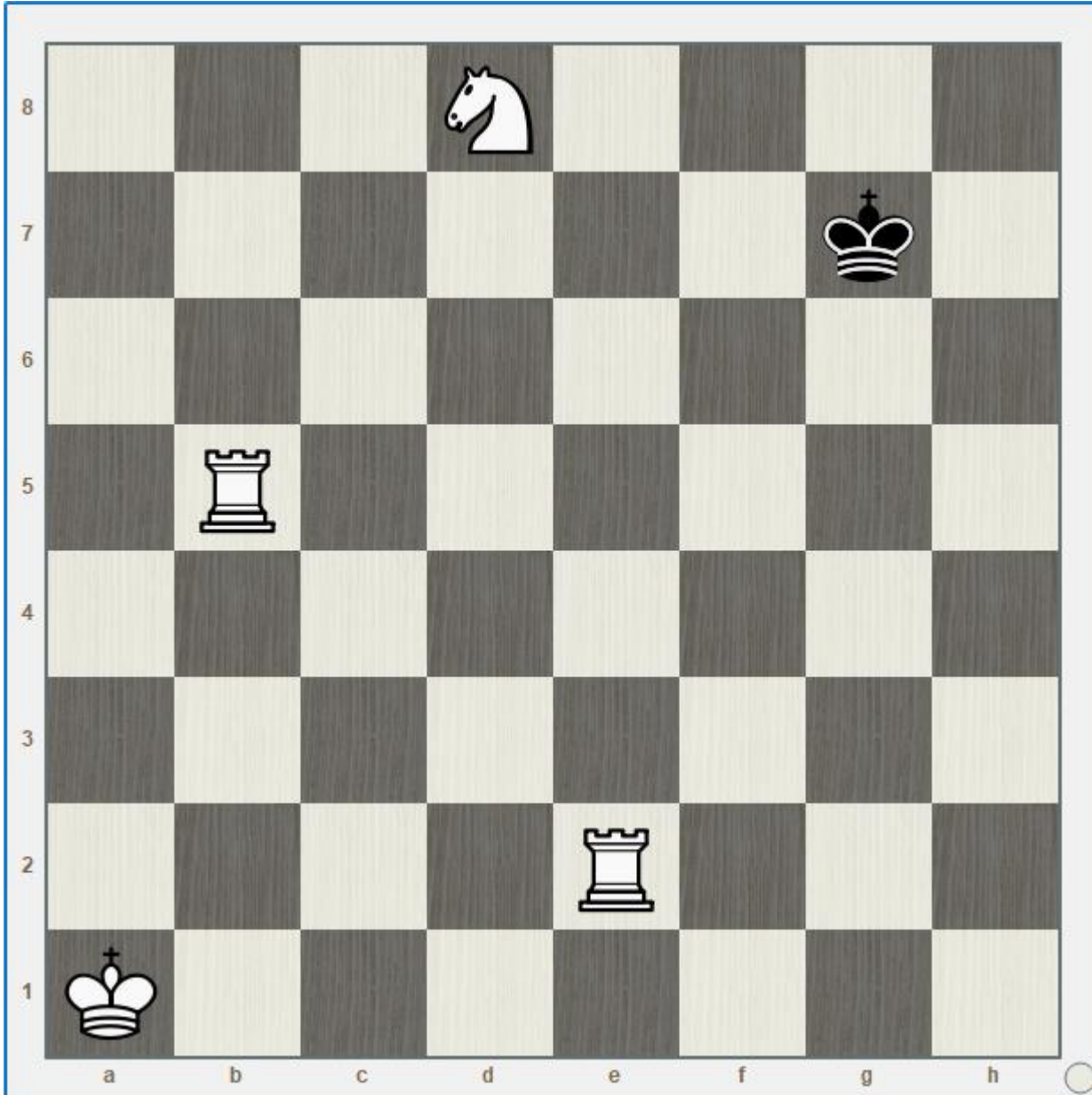
Onde deve ser colocado um bispo branco para atacar as duas torres ao mesmo tempo?



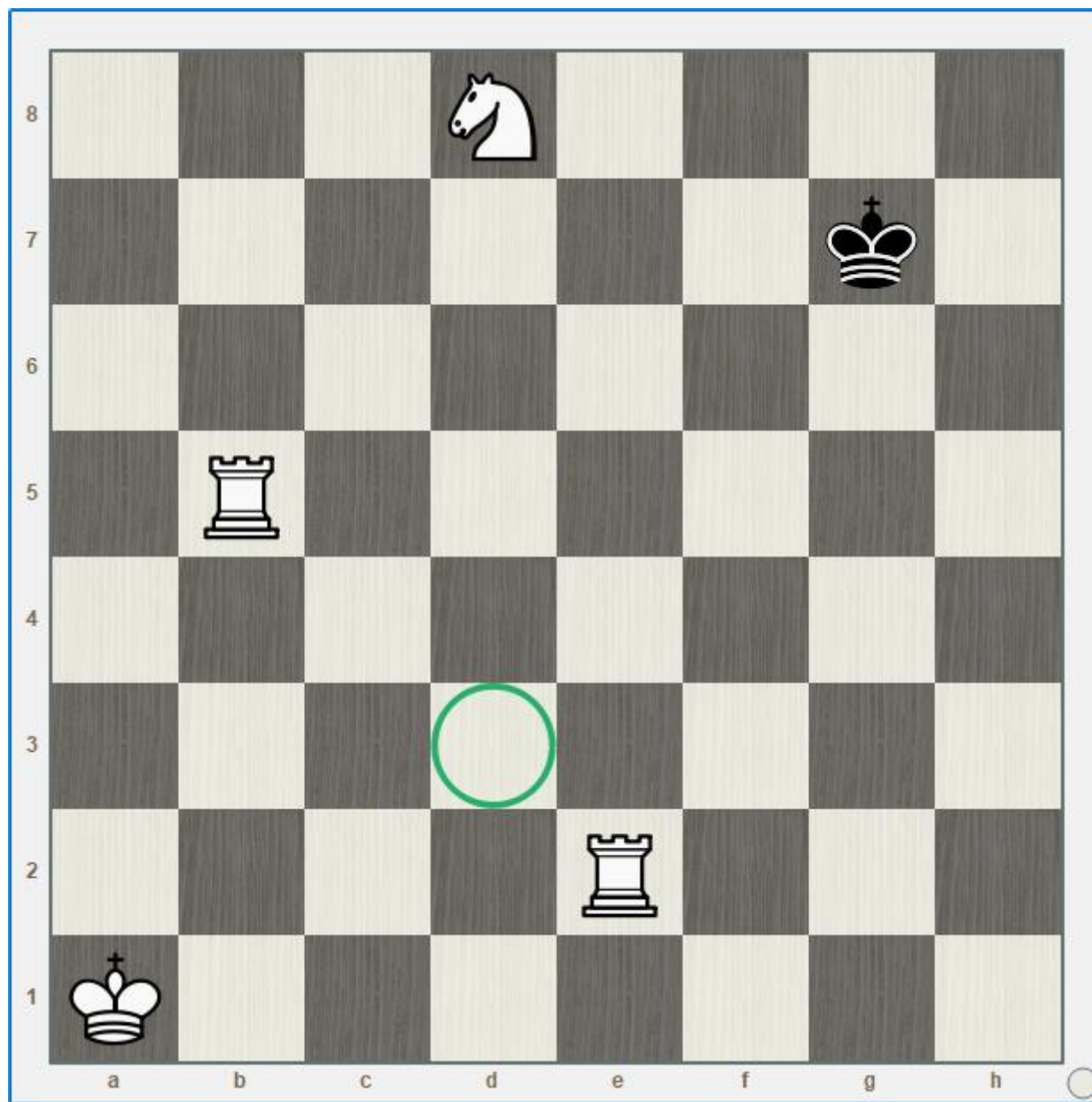
Onde deve ser colocada uma torre branca para atacar os dois bispos pretos ao mesmo tempo?



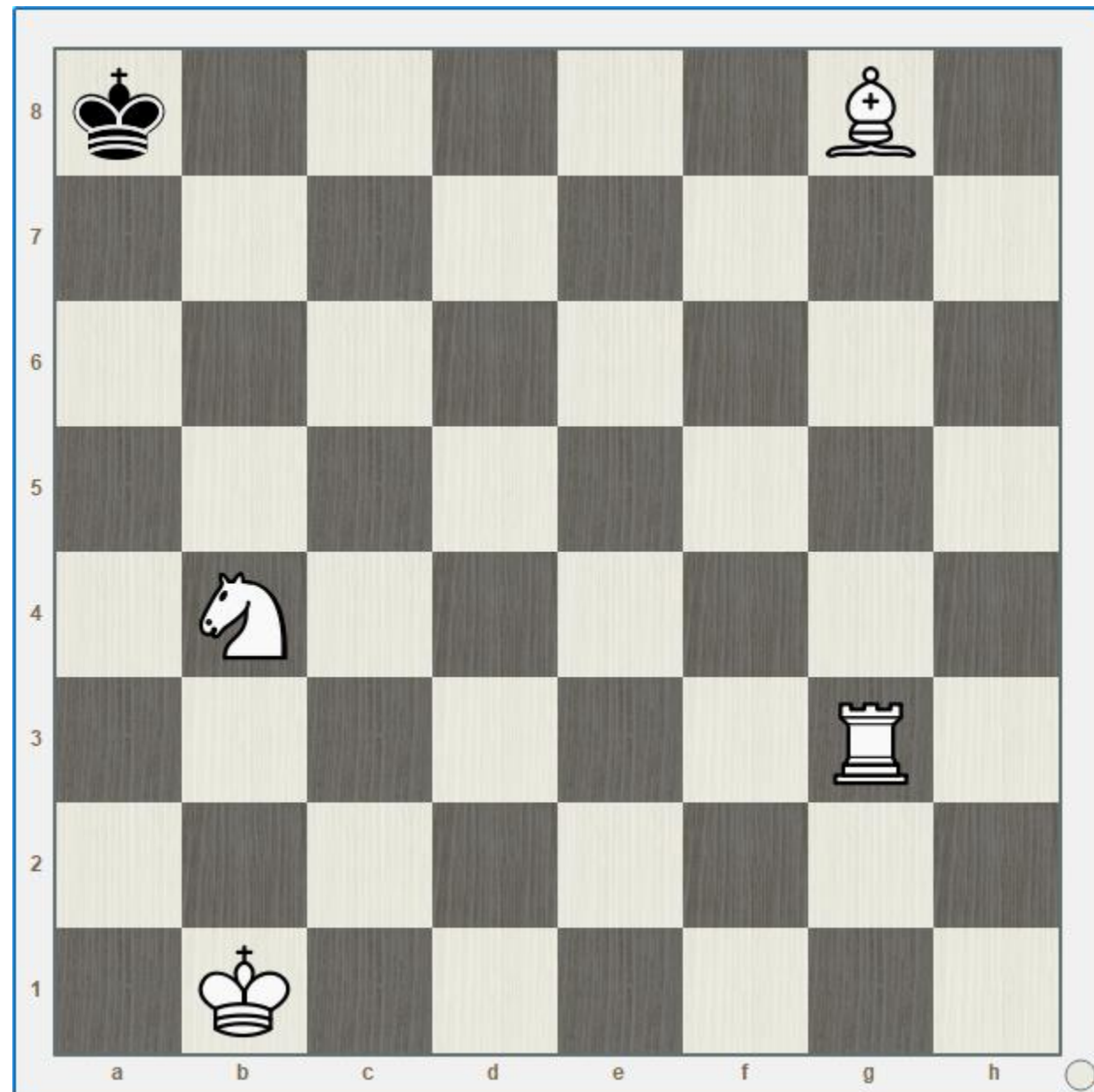


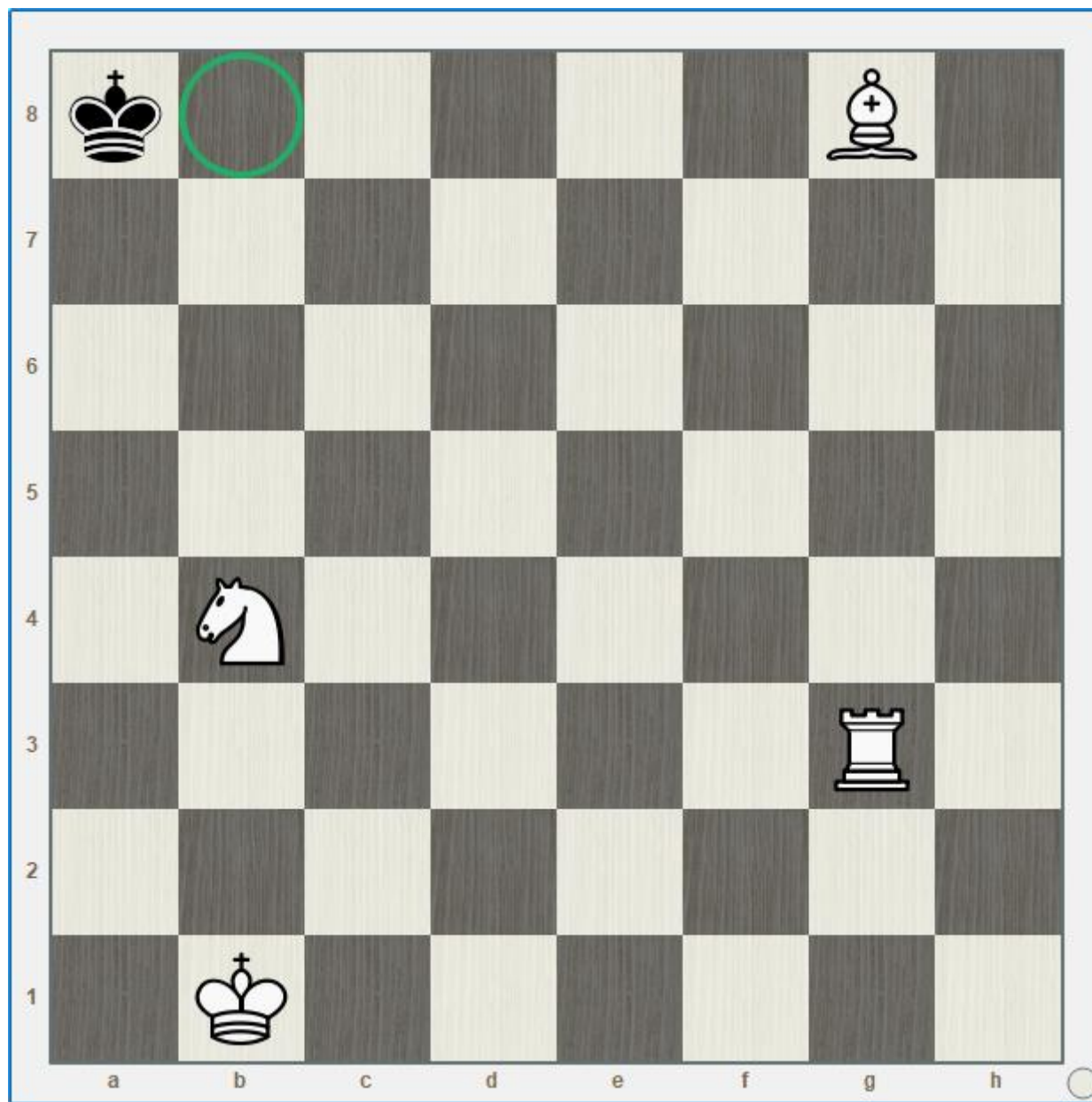


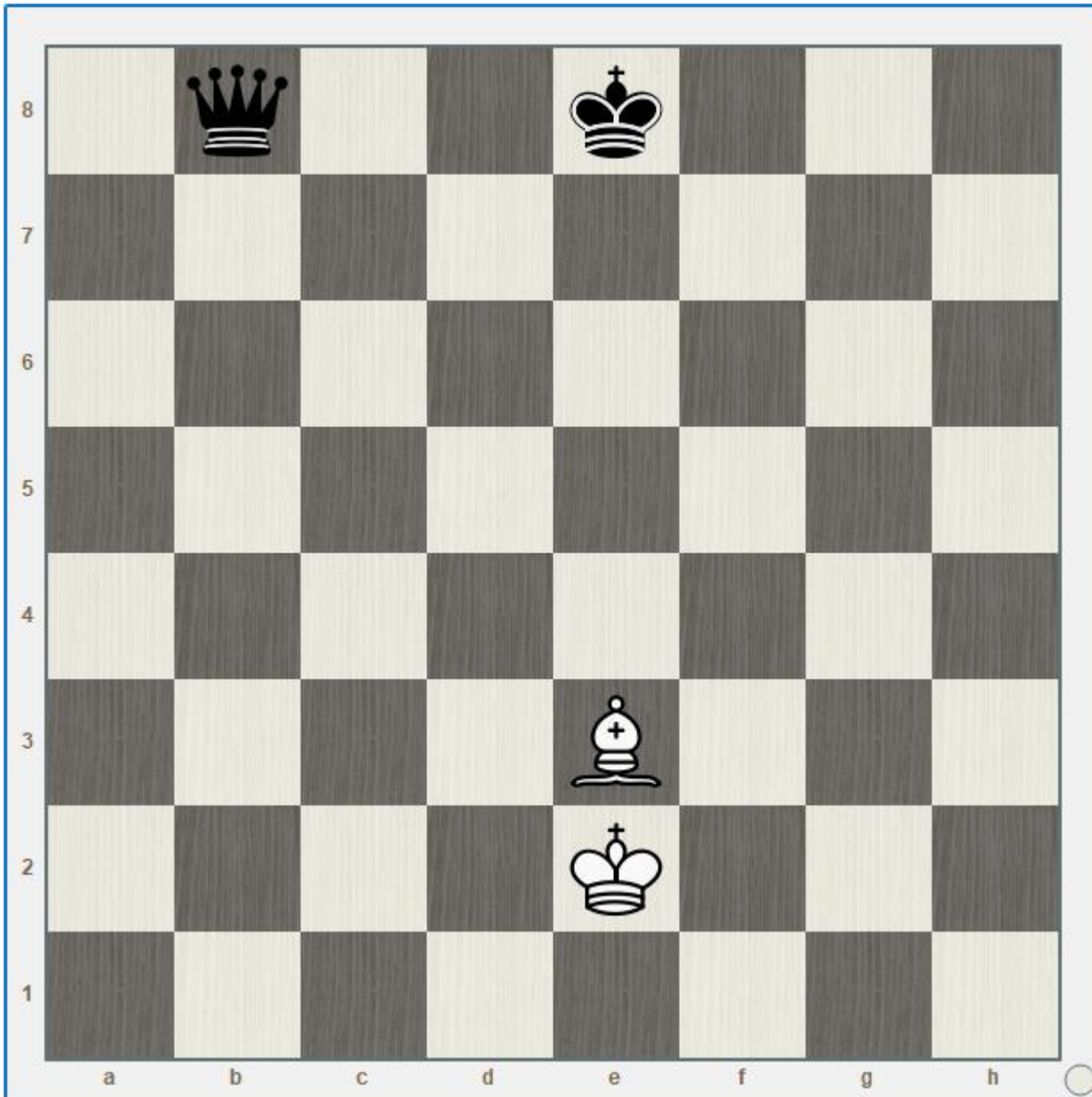
Onde deveria ser colocada uma dama preta para atacar ao mesmo tempo o cavalo e as duas torres brancas?



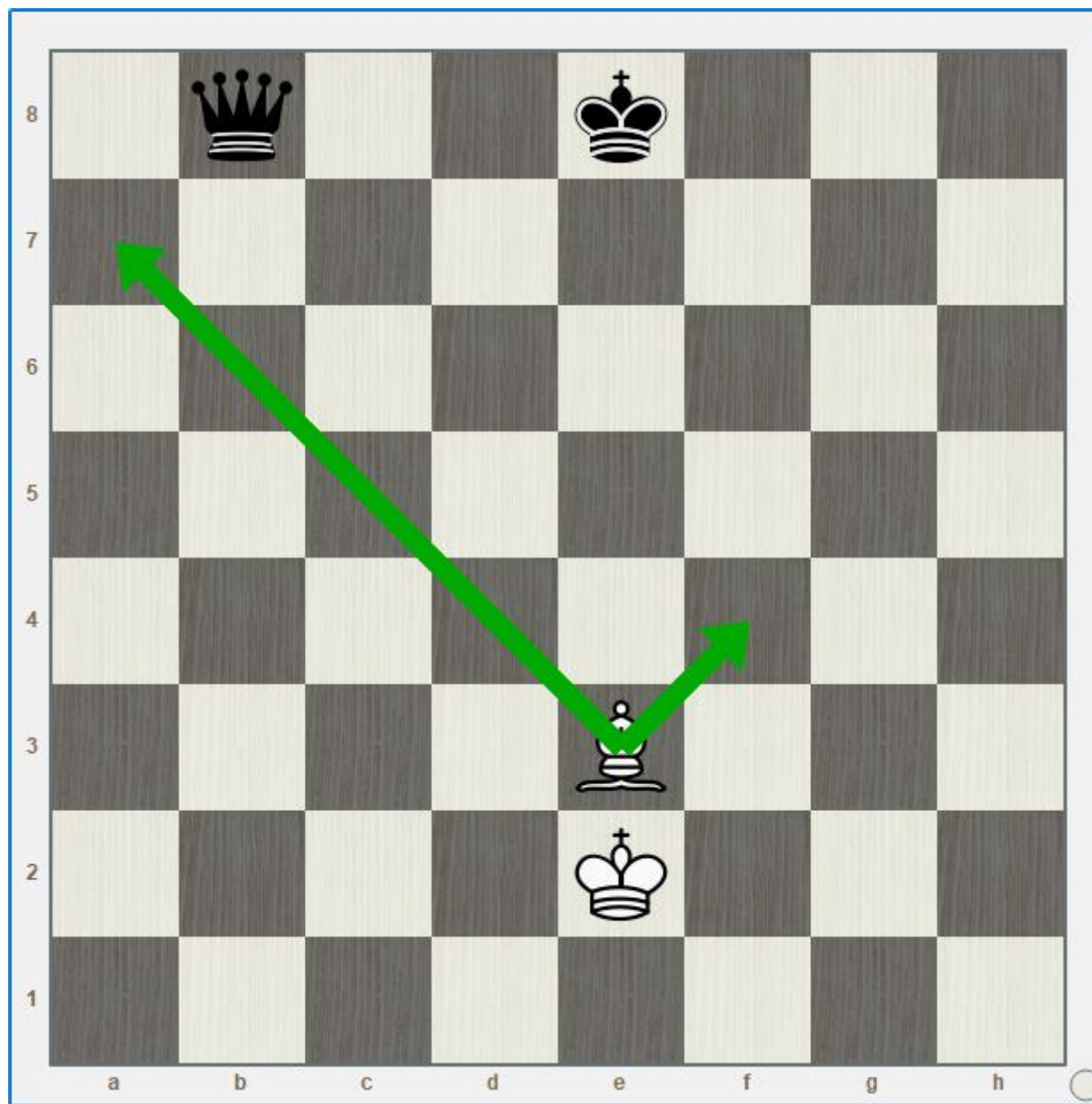
Onde deveria ser colocada uma dama preta para atacar ao mesmo tempo o cavalo, o bispo e a torre brancas?



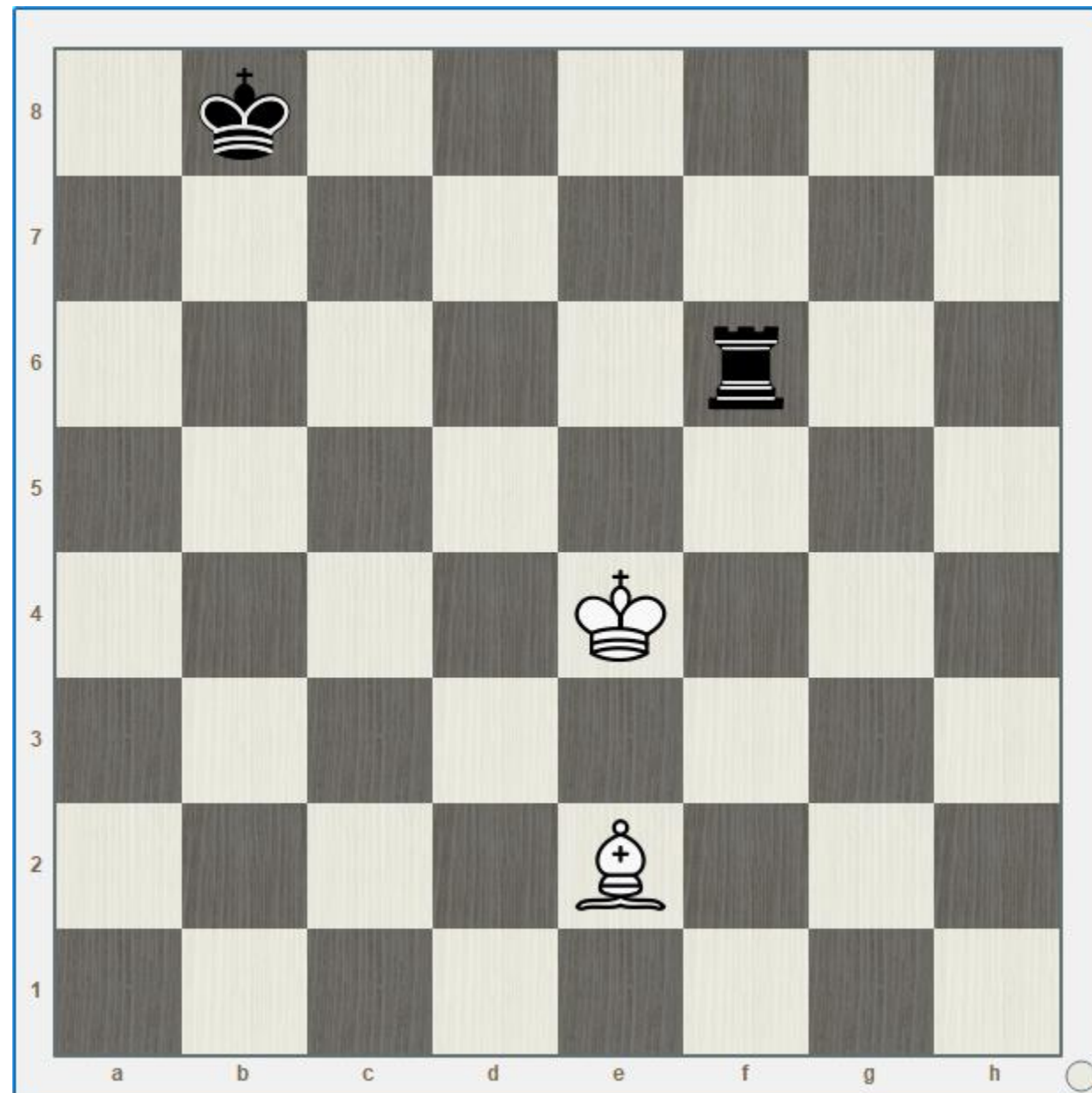


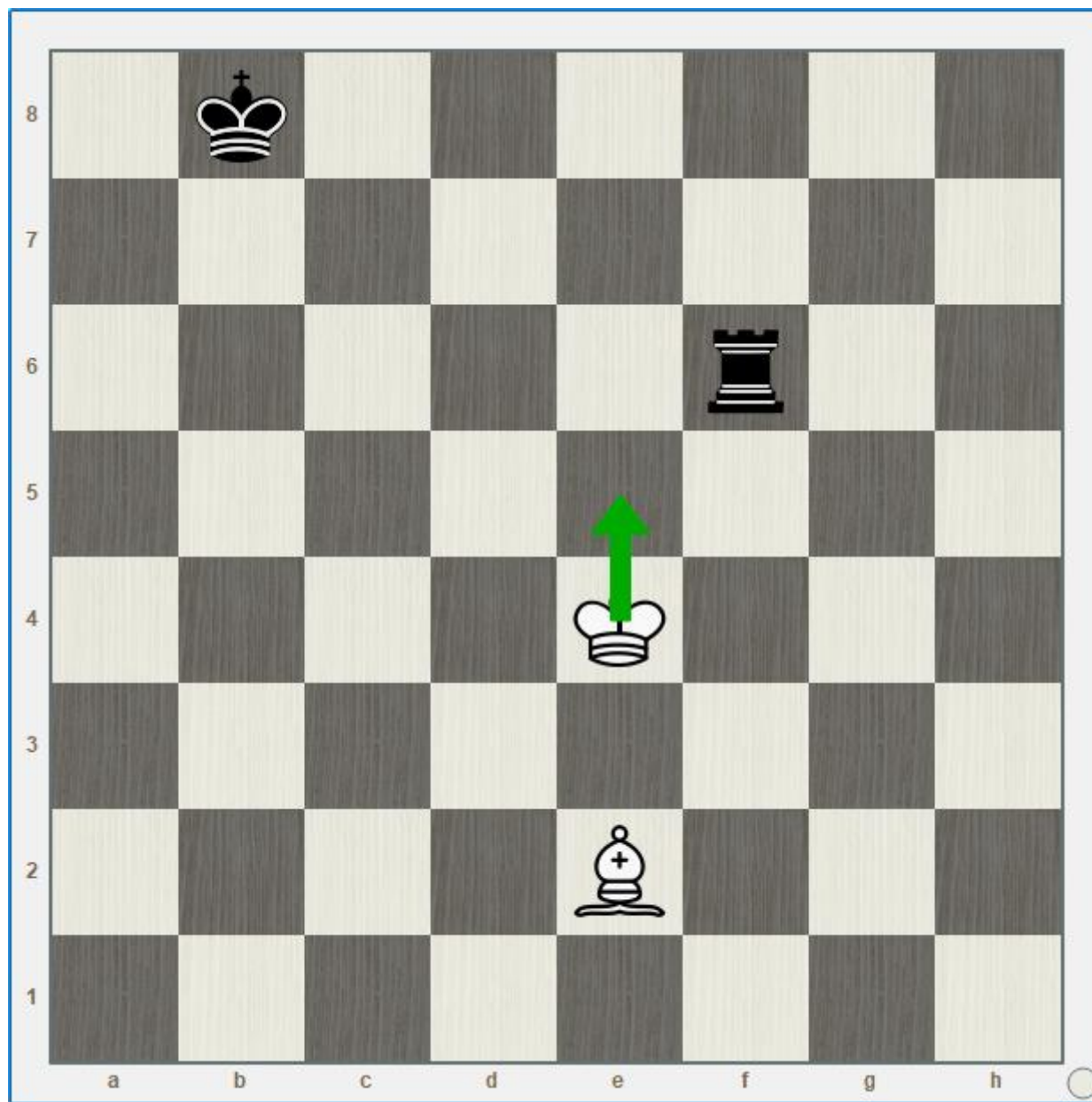


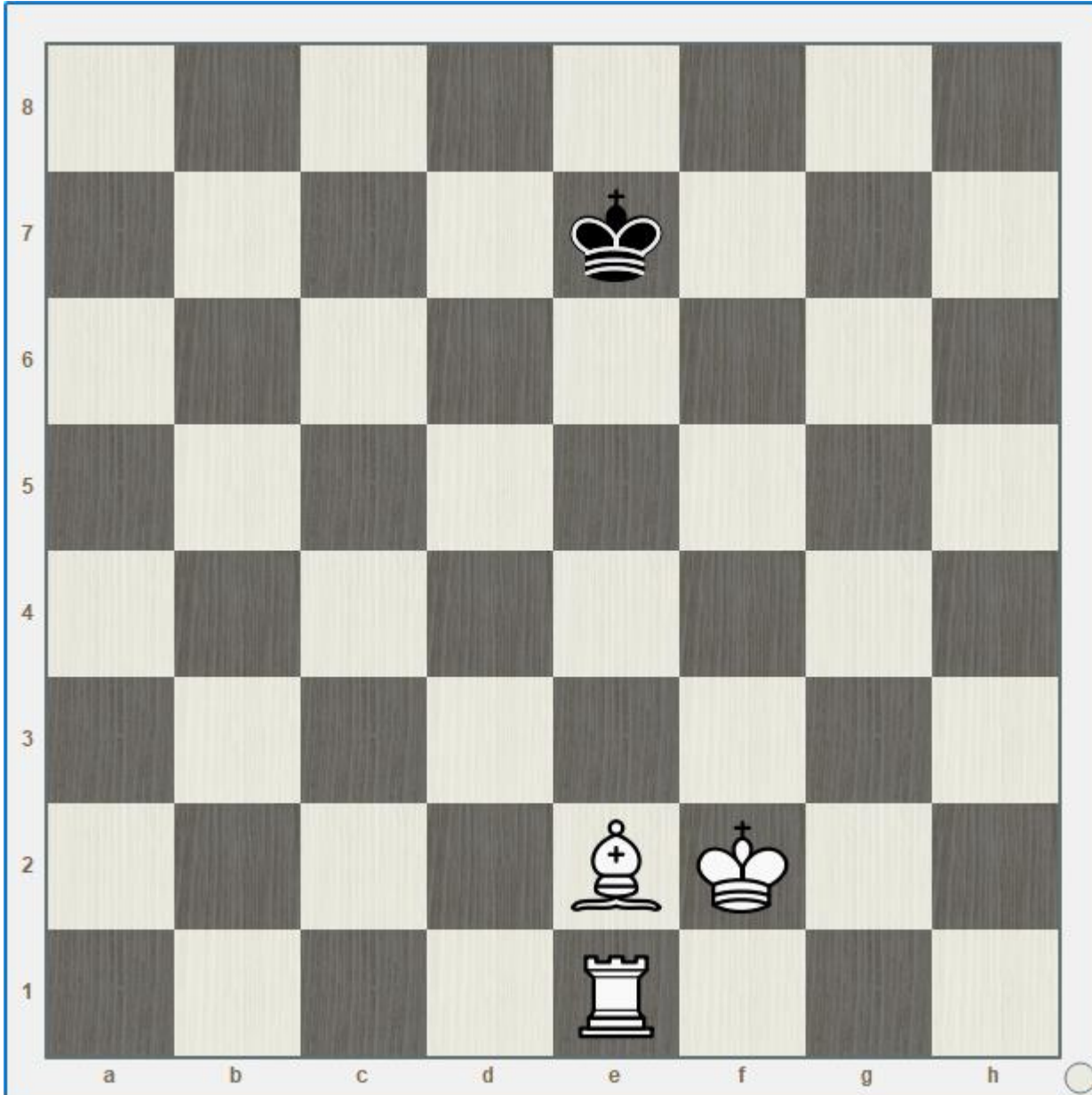
Que lances podem ser feitos com as peças brancas para atacar uma peça preta?



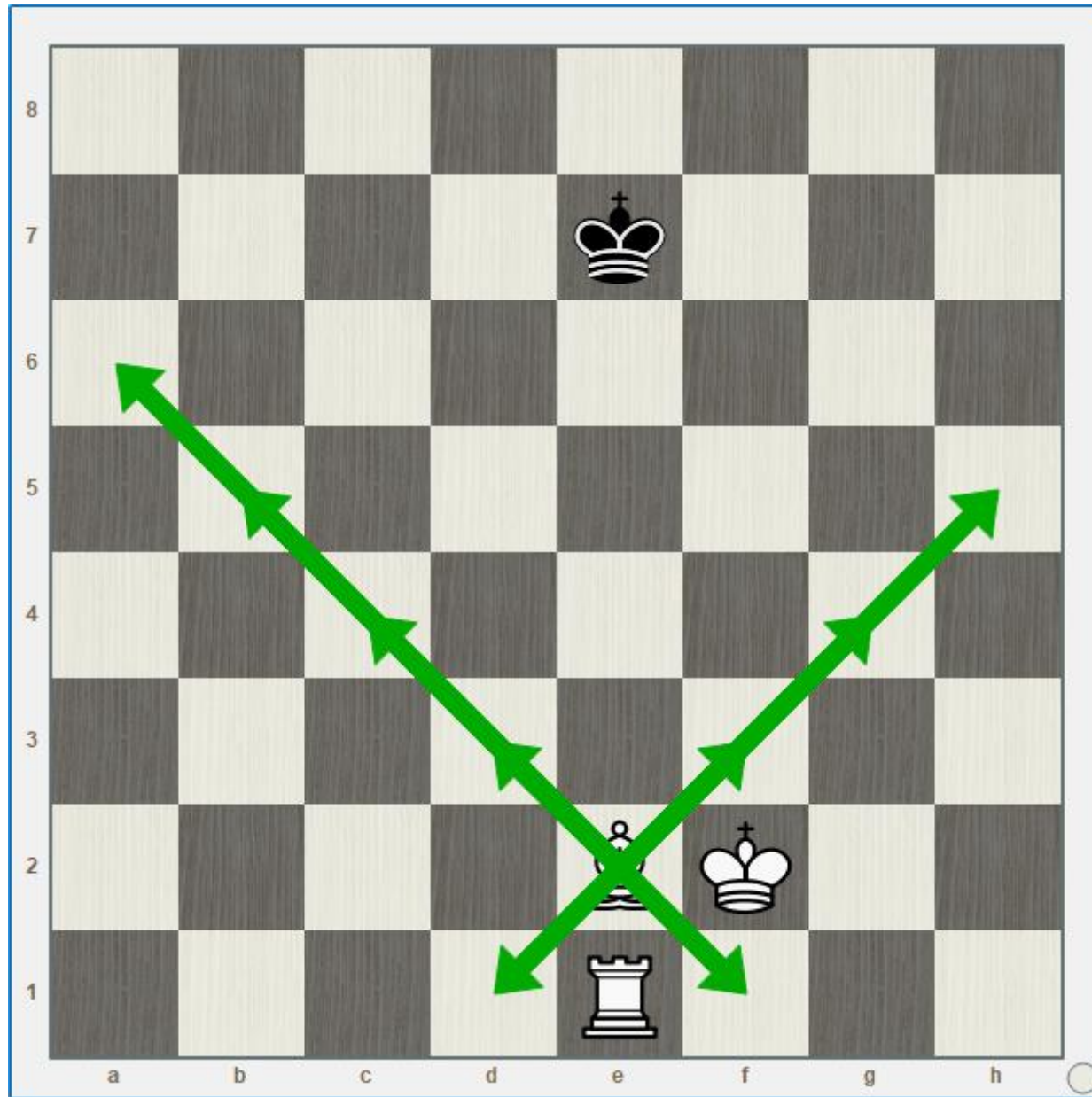
Qual jogada pode ser feita com as peças brancas para atacar uma peça preta?



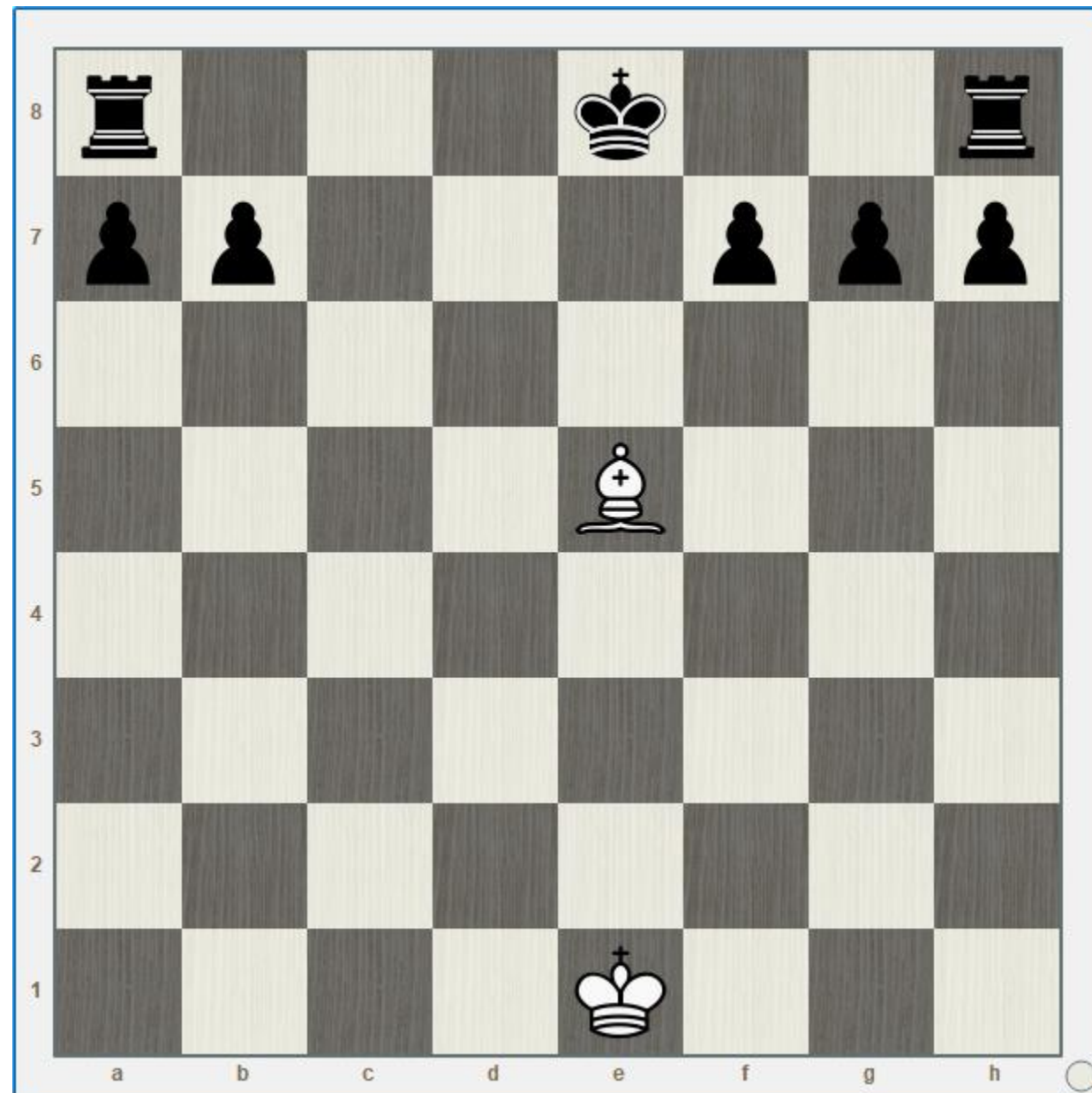


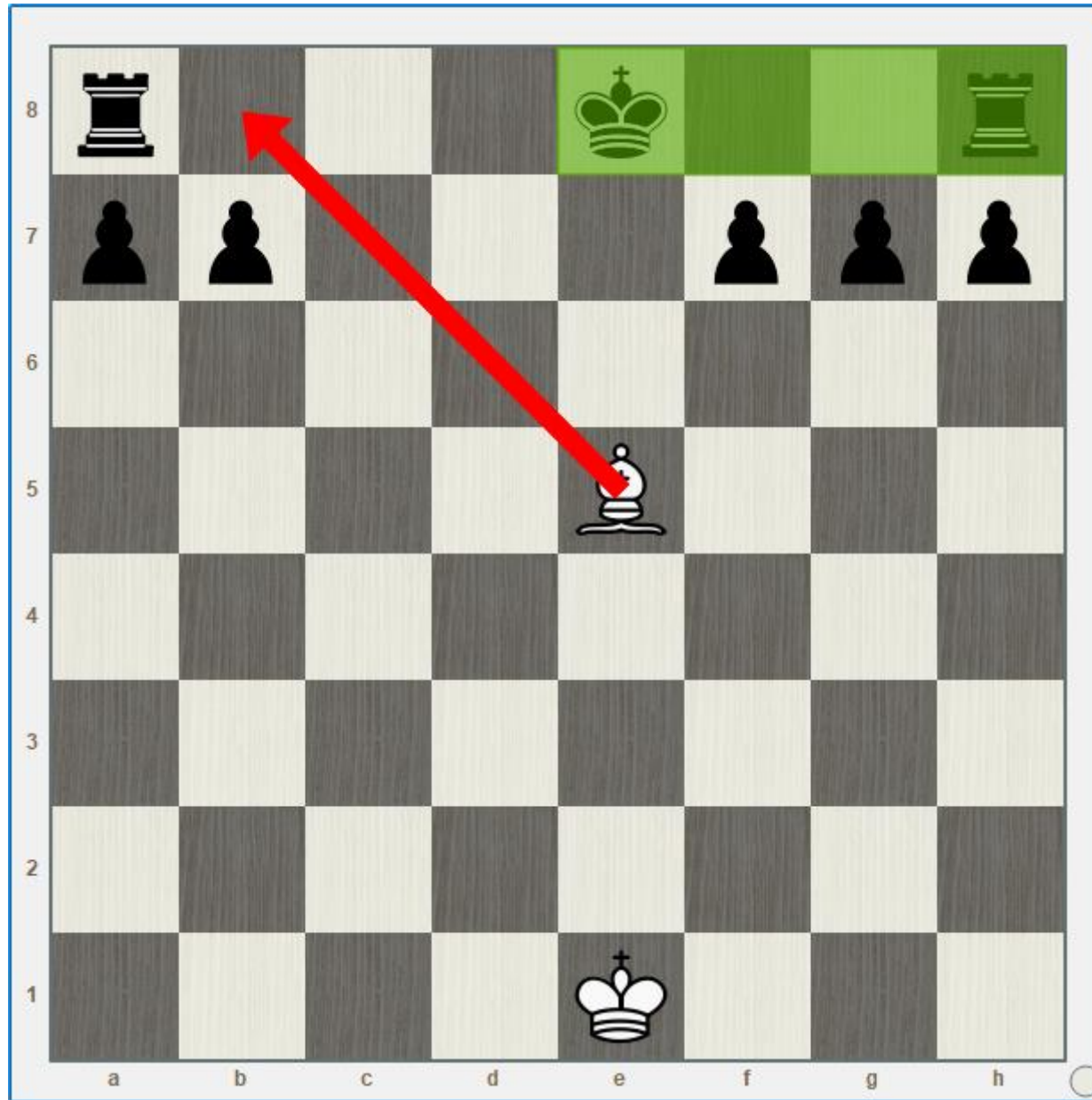


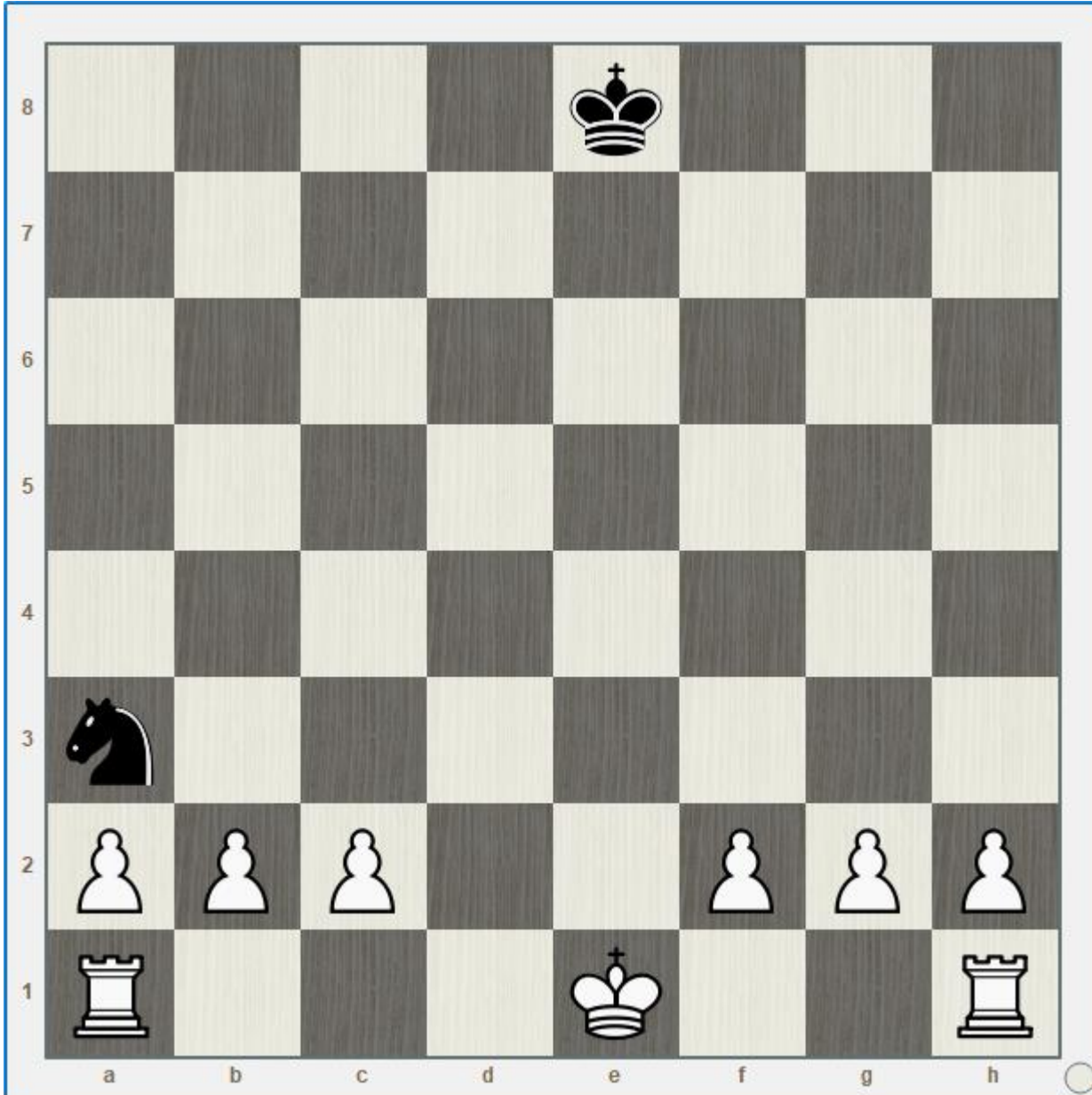
Qual lance pode ser feito com as peças brancas para atacar o rei preto?



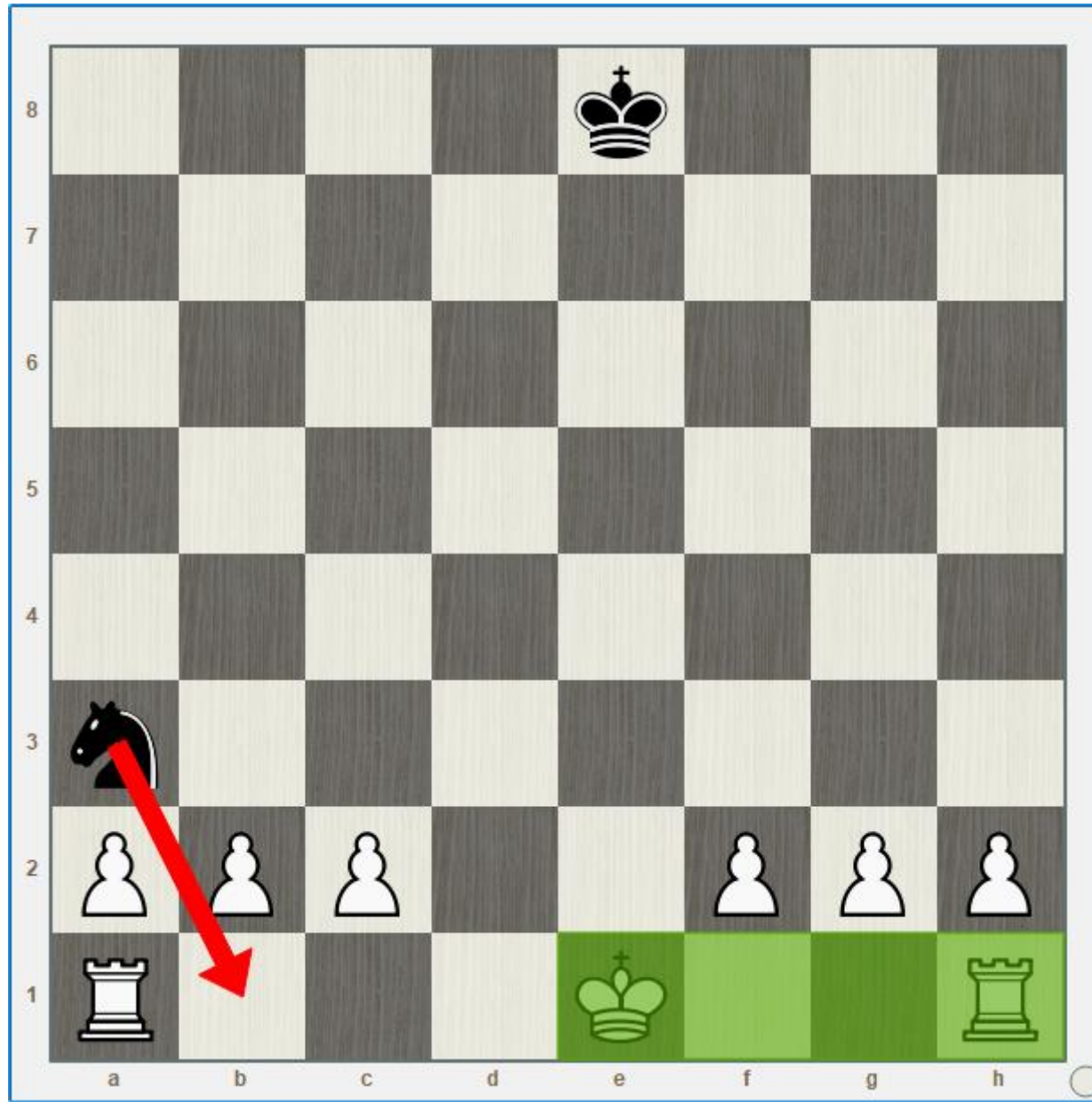
Pode-se, com as pretas, fazer o roque pequeno? E o roque grande?



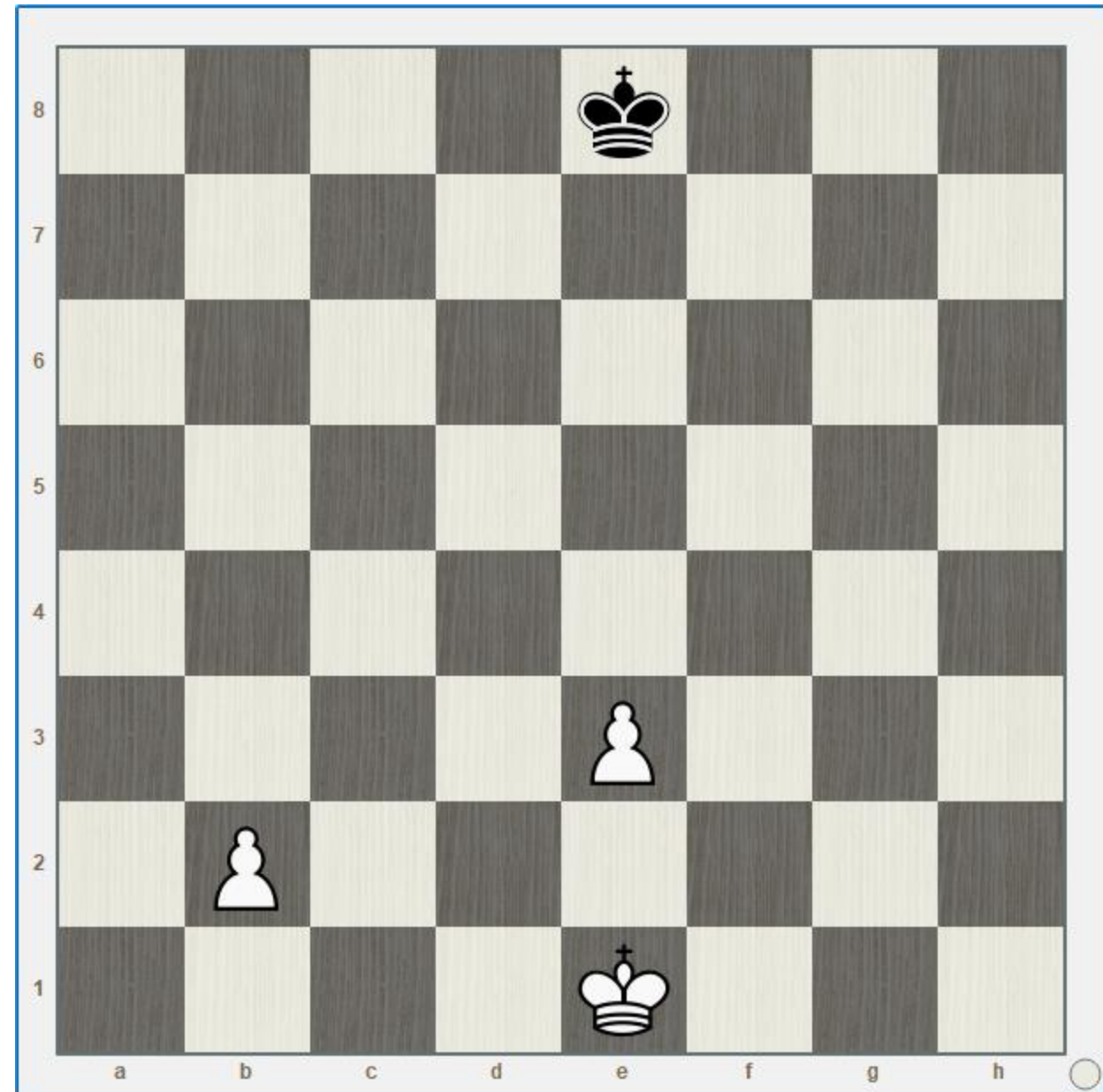


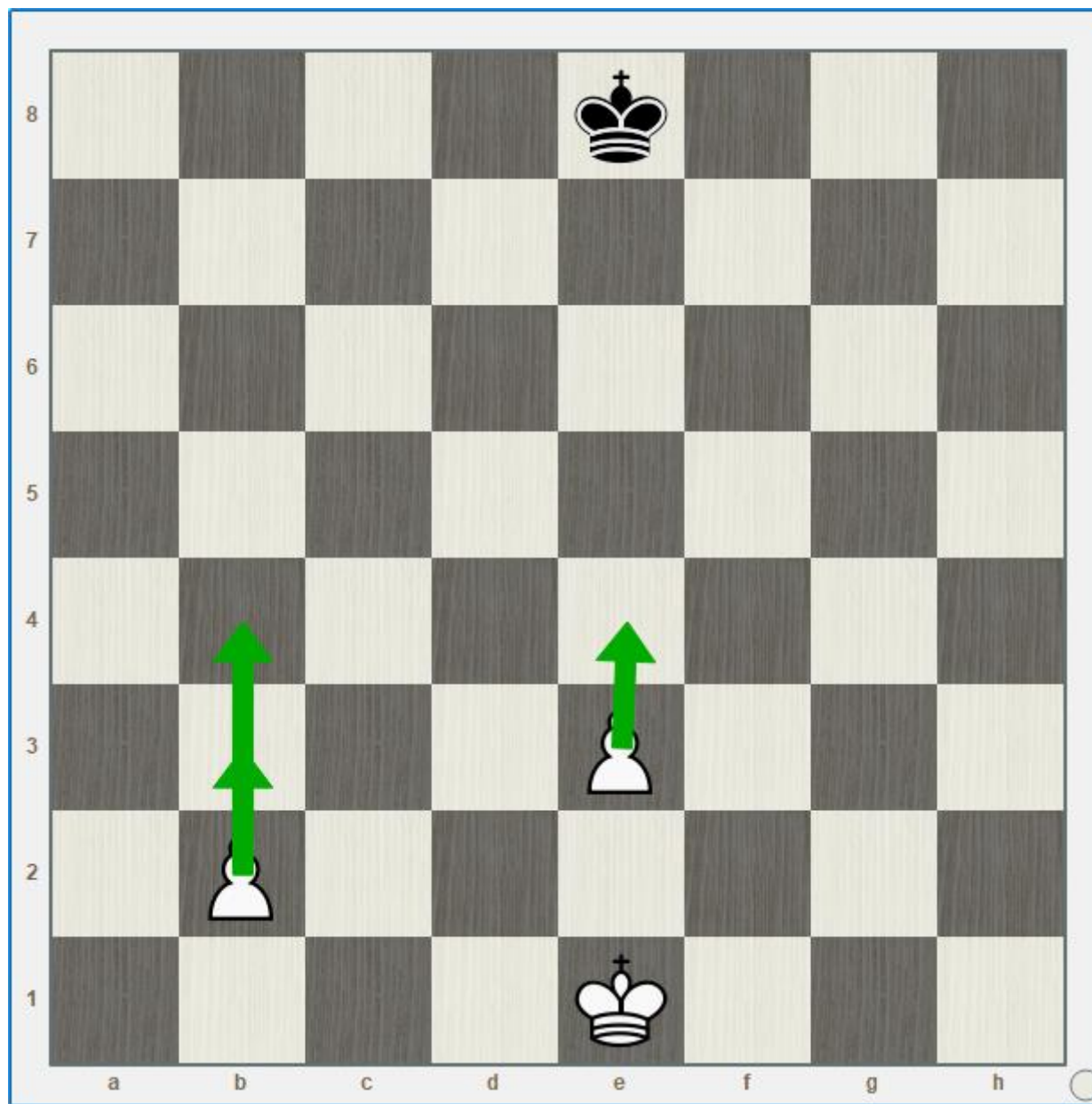


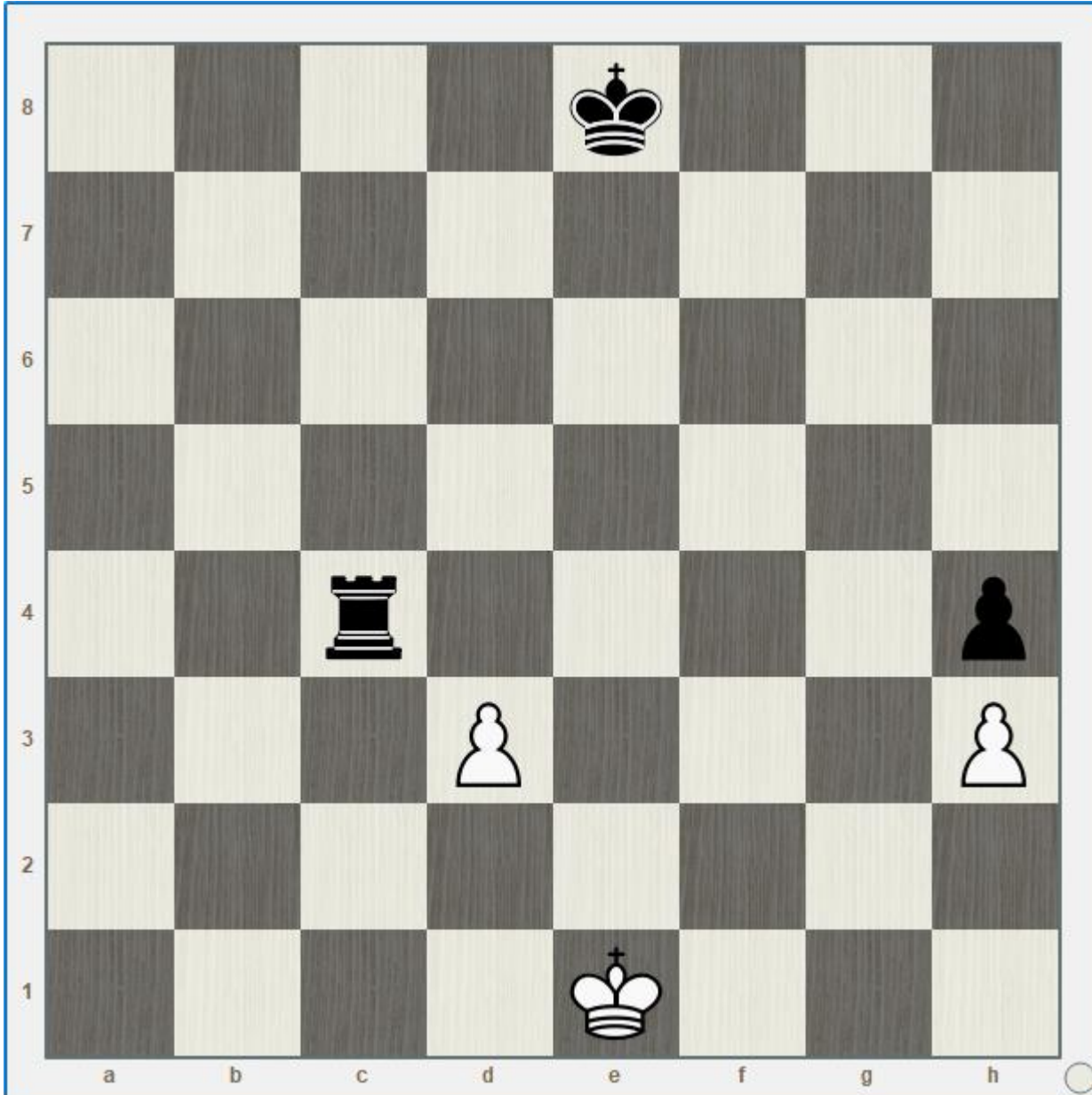
Pode-se, com as brancas, fazer o roque pequeno? E o roque grande?



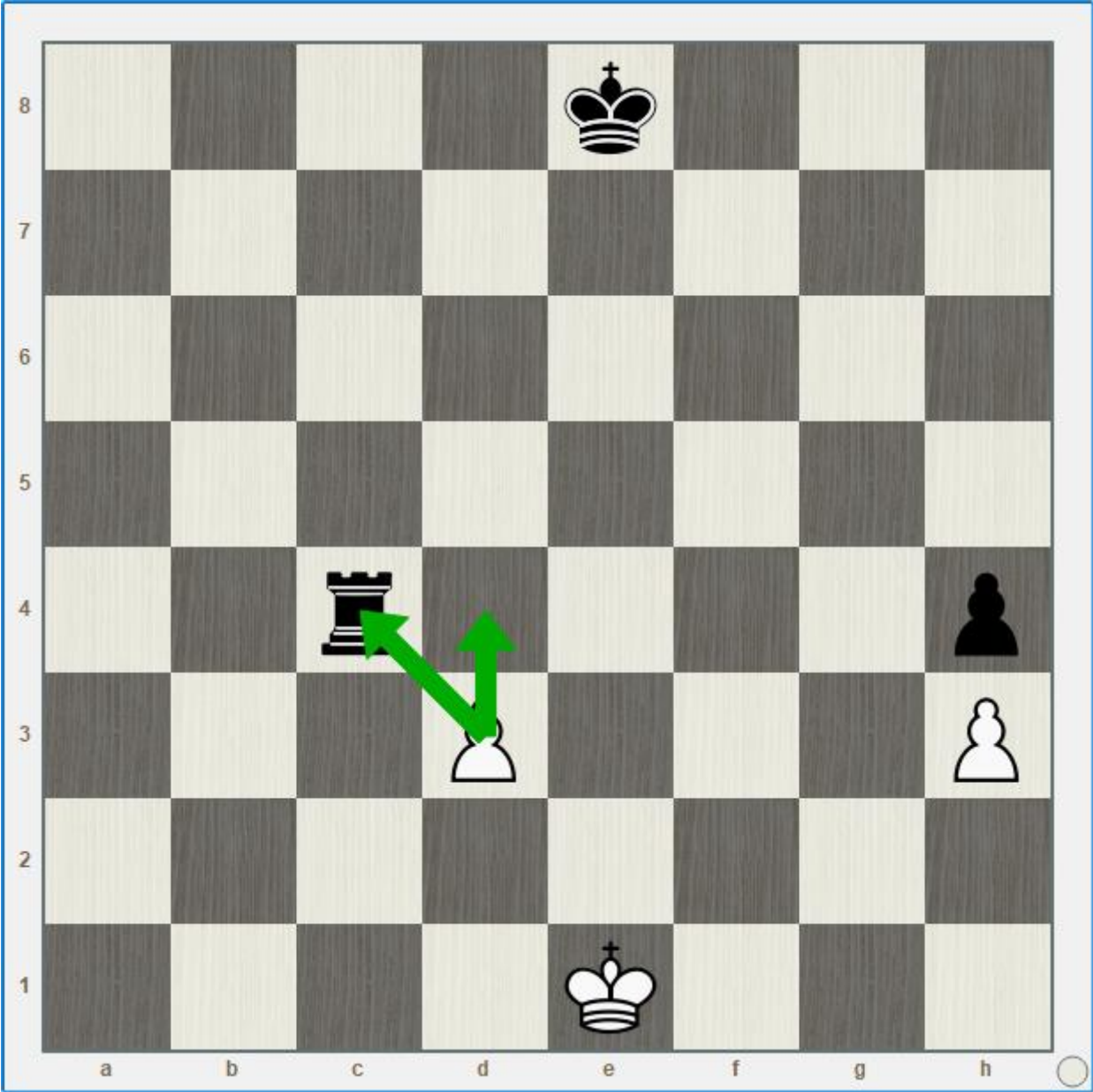
Indique todos os lances que podem fazer os peões.



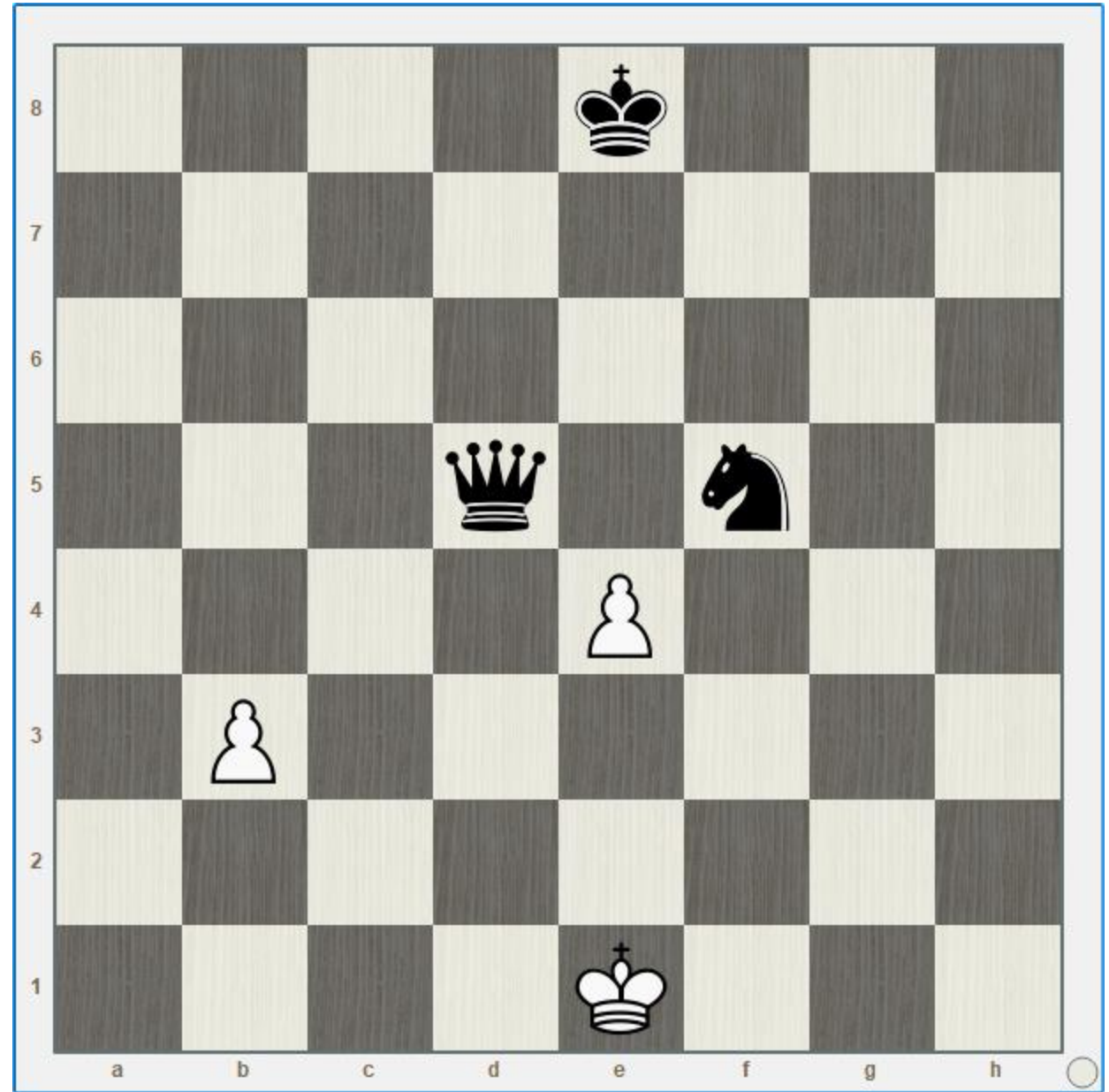


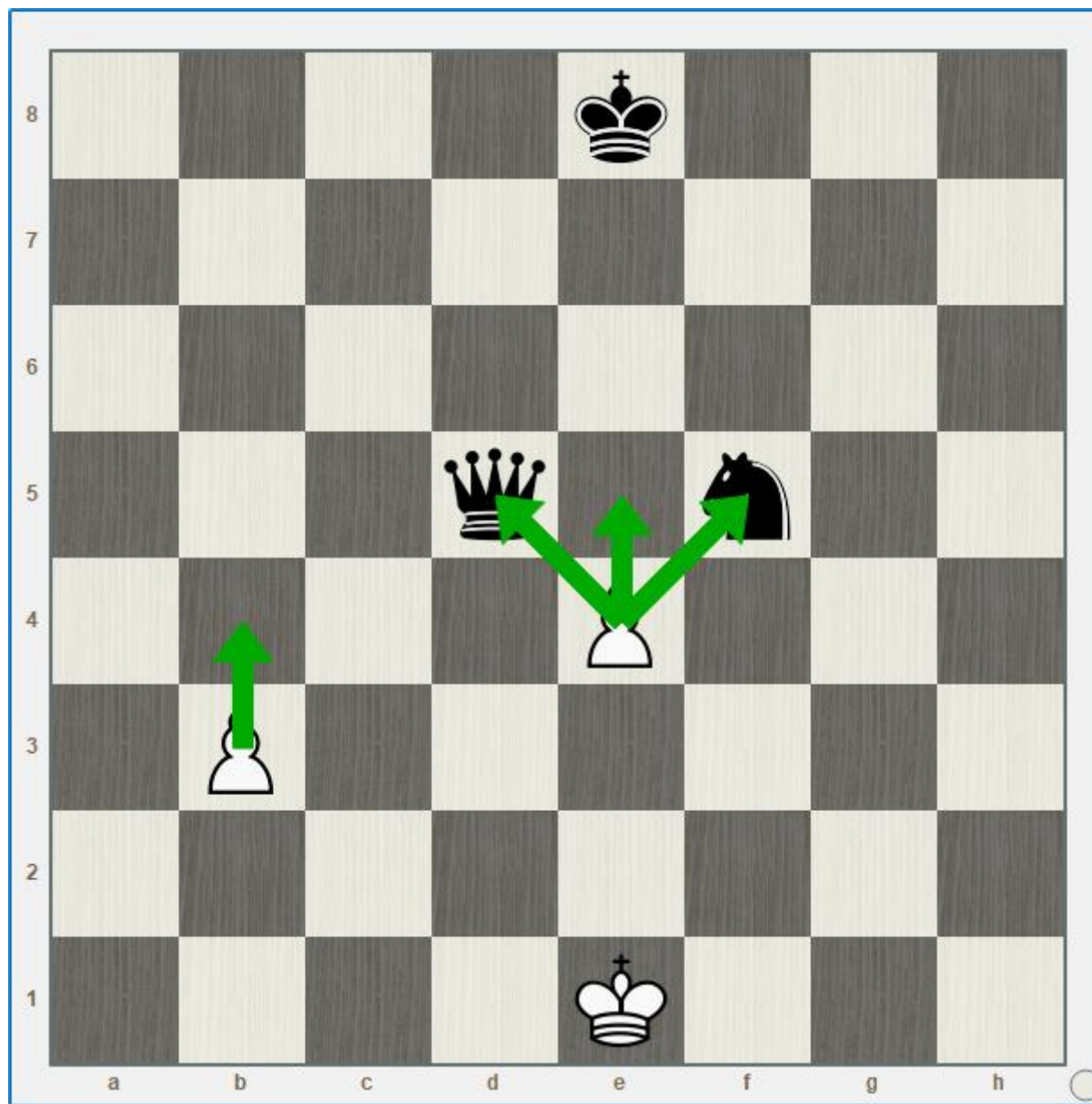


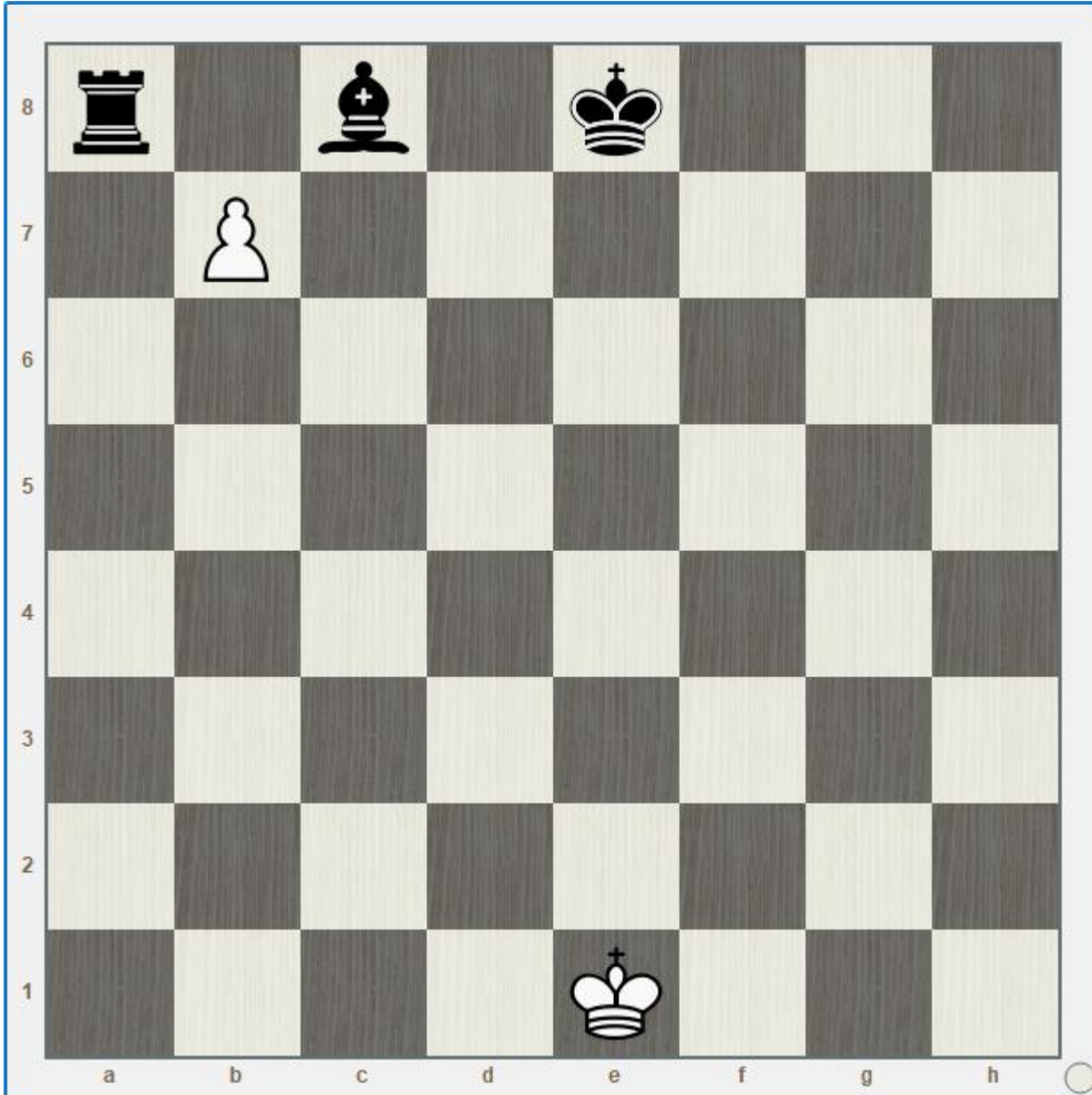
Indique todos os lances que podem fazer os peões.



Indique todos os lances que podem fazer os peões.







Indique todos os lances que podem fazer os peões.

